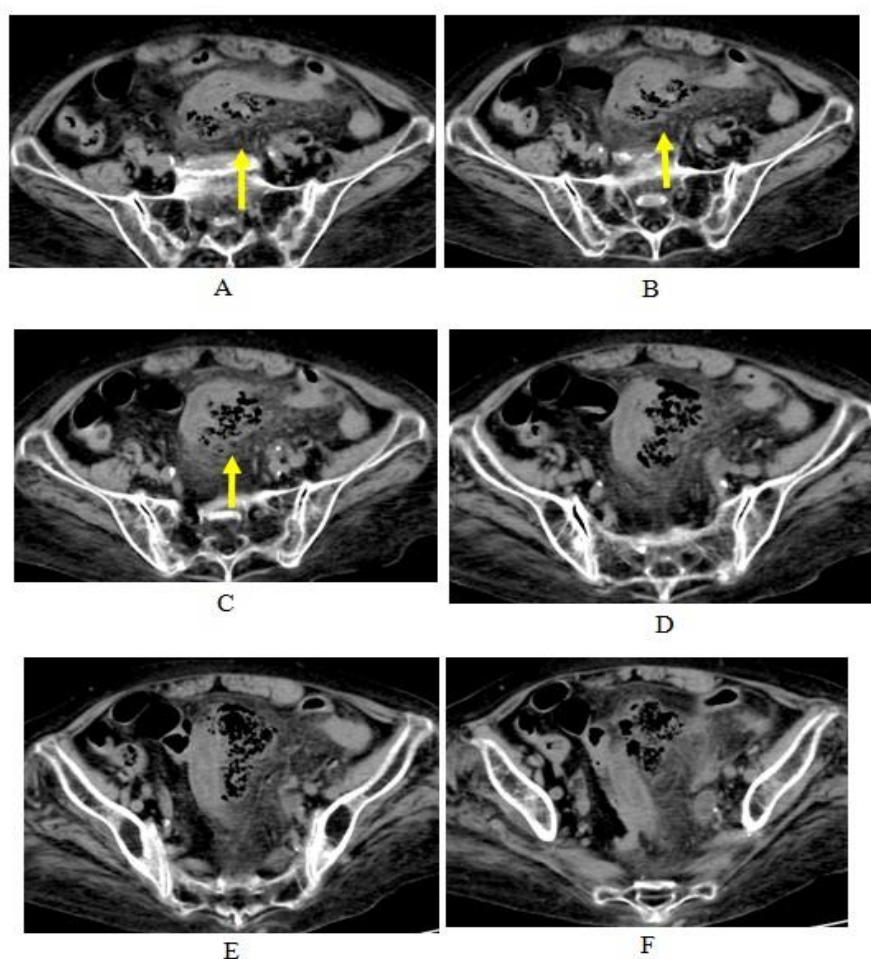


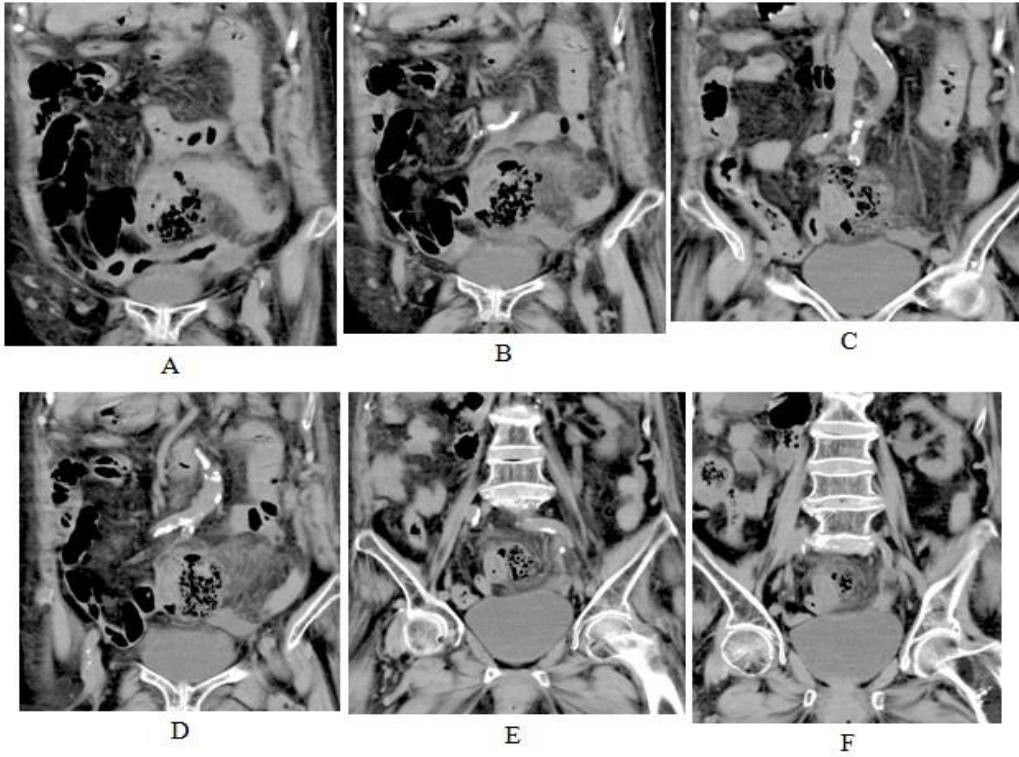
## A Case of the 10 days

### Case 288

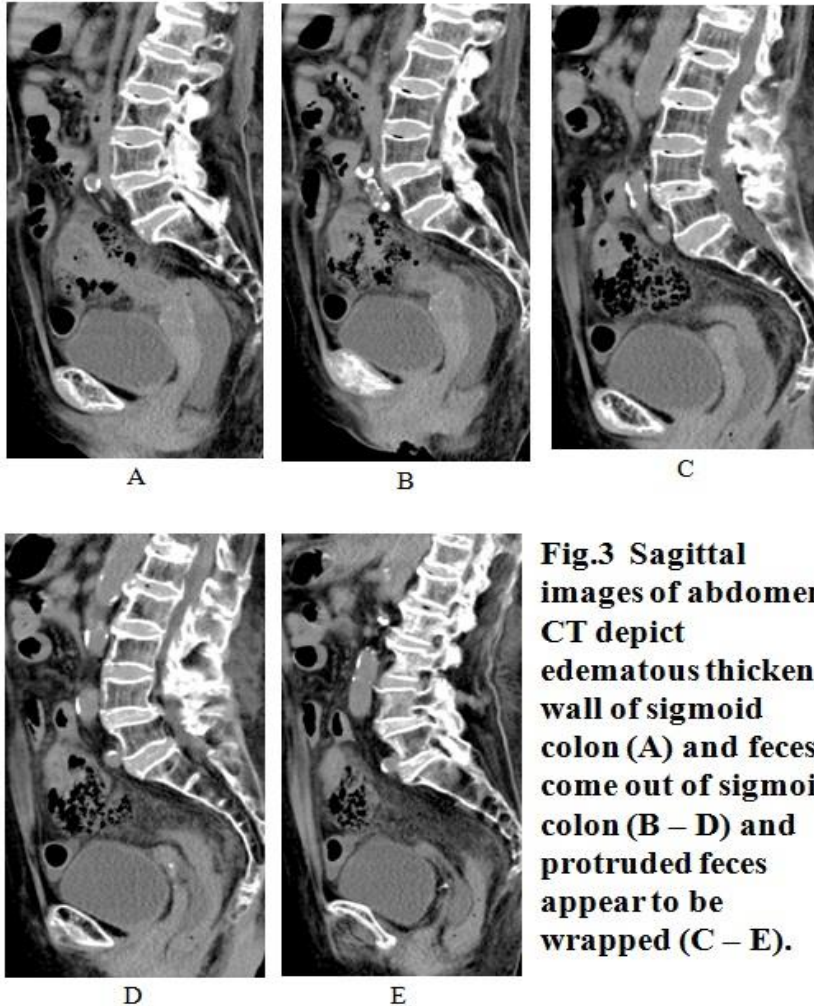
A one hundred-year-old female who made a life in a care center, experienced bloody vomiting this morning and presented in our hospital with her helper. Medical findings revealed pulse 98/min, blood pressure 123/76 mmHg, SaO<sub>2</sub> 97 under O<sub>2</sub> inhalation of 4L/min via nasal tube and positive abdomen defense. Laboratory test revealed white blood cells 4270/mm<sup>3</sup>, creatinine 2.1 mg/dL, platelets 114000/mm<sup>3</sup>, total protein 6.2g/dL, albumin 2.7g/dL. Before endoscopic examination, abdomen CT was taken (Figs 1 – 3).



**Fig.1 Axial images of pelvic CT depict feces come out of sigmoid colon (A – C, arrow) and expand along with trajectory of sigmoid colon.**



**Fig. 2** Coronal images of abdomen CT depict feces come out of sigmoid colon (A, B) and the protruded feces appear to be wrapped (C – F).



**Fig.3** Sagittal images of abdomen CT depict edematous thickened wall of sigmoid colon (A) and feces come out of sigmoid colon (B – D) and protruded feces appear to be wrapped (C – E).

What is your imaging diagnosis ?

---

1. Constipation
2. Ulcerative colitis
3. Infectious colitis
4. Sigmoid colon cancer
5. Sigmoid colon perforation

answer

2023.1.4