

A Case of the 10 days

Case 317

A forty-five-year-old male presented in our hospital for abdominal fullness and lower abdominal pain which began last afternoon. He got anti-analgetic medicine last night but in vain. Laboratory test revealed creatinine 1.08 mg/dL, total bilirubin 3.61 mg/dL, white blood cells 19360/mm³, neutrophils 88.1%. He refused to take abdomen CT for economic reason. Three days later, he came to our hospital for persistent abdominal pain. At last, he took enhanced CT for further investigation (Figs 1-5).

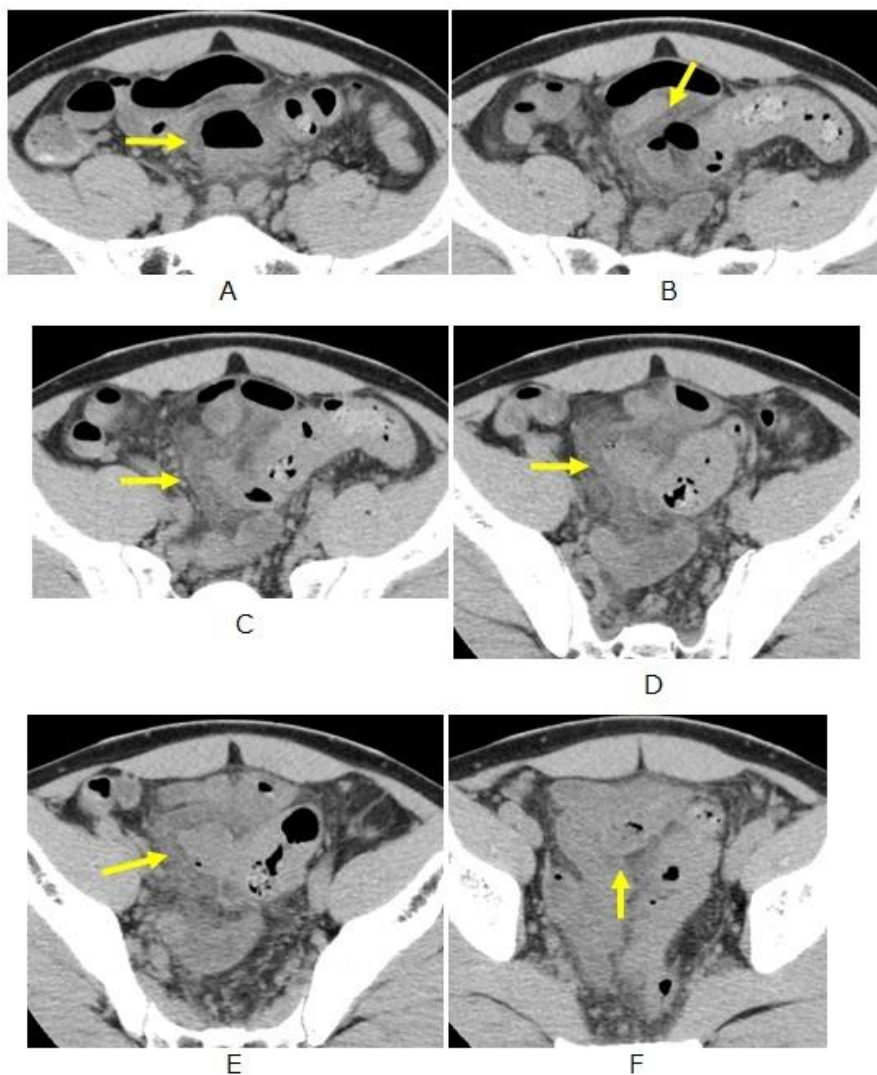


Fig. 1 Axial CT images depict a lesion composing of gas collection with fluid retention extending caudally (A-F, arrow). Note swollen small intestine covered the lesion (A-F).

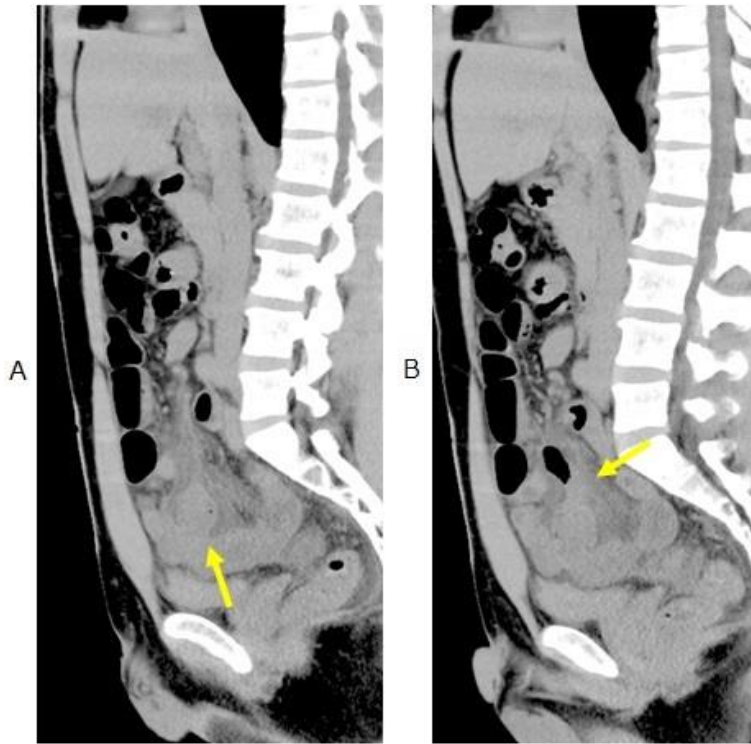


Fig. 2 Sagittal CT images depict a lesion composed of gas collection and fluid retention (A, B arrow).

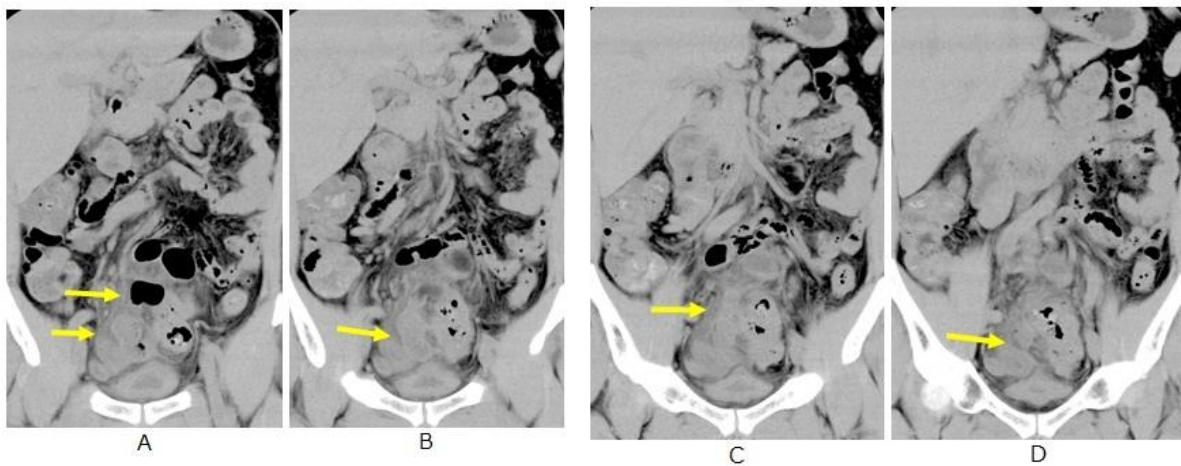


Fig. 3 Coronal CT images depict a lesion composed of gas and fluid retention (A-D, arrow) situated in sigmoid mesocolon with dirty fat sign.

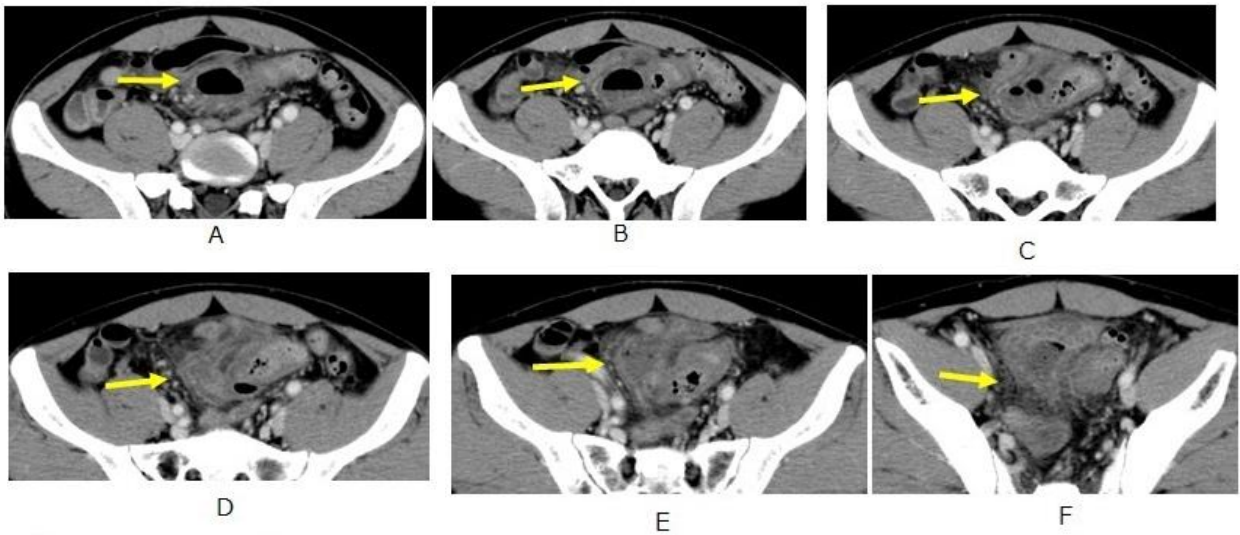


Fig 4. Axial contrast-enhanced CT images depict a lesion composed of gas collection and fluid retention extending caudally (A-F, arrow).

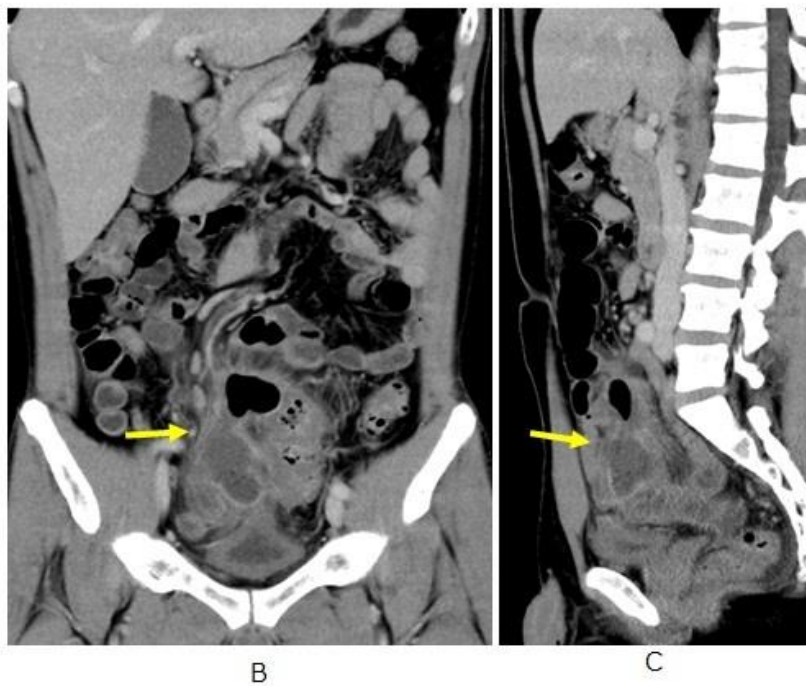


Fig. 5 Axial (A),coronal (B) and sagittal (C) contrast CT images depict a lesion with gas collection and fluid retention extending caudally (arrow).

What is imaging diagnosis?

1. Sigmoid colon cancer
2. Sigmoid diverticulitis
3. Sigmoid colon perforation
4. Sigmoid mesocolon hernia

answer

2023.11.24