

A Case of the 10 days

Case 330

A sixty-six-year-old female presented in our hospital for numbness of bilateral lower extremities, predominantly left lower extremity rather than right, associated with motion disorder. She experienced severe pain on back to right axilla two weeks before, getting abating and improved. Two days before, she realized sensory nerve disturbance on lower extremities. She became unclear to be in the state whether she wore her slipper or not. She had sensory paralysis and felt loss of strength on left extremity rather than right. She took thoracic spine MRI for further investigation.

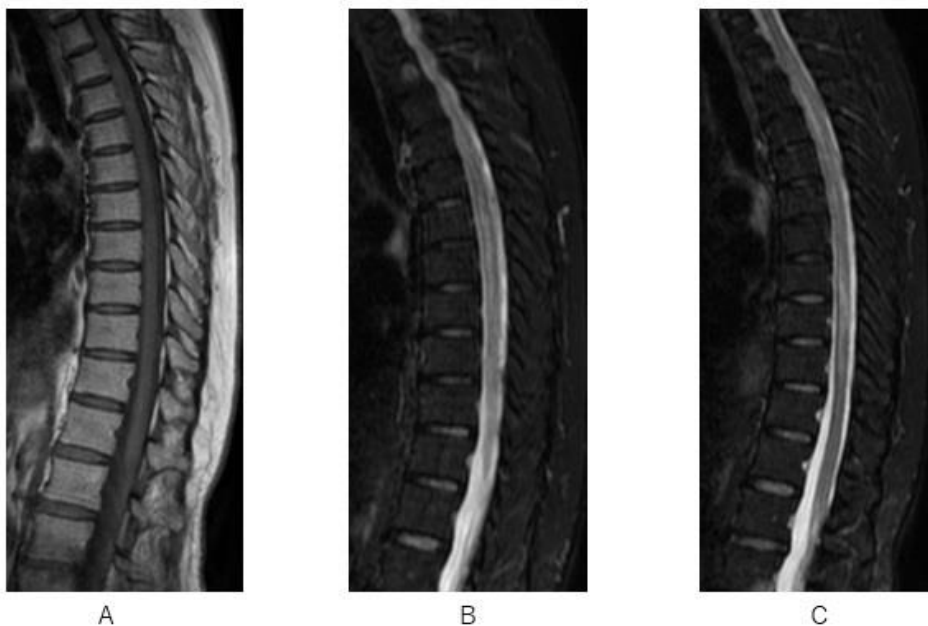


Fig.1 MRI sagittal images depict no abnormality on T1WI(A) but a long lesion in thoracic spinal cord with high signal fat suppression on T2WI(B, C).

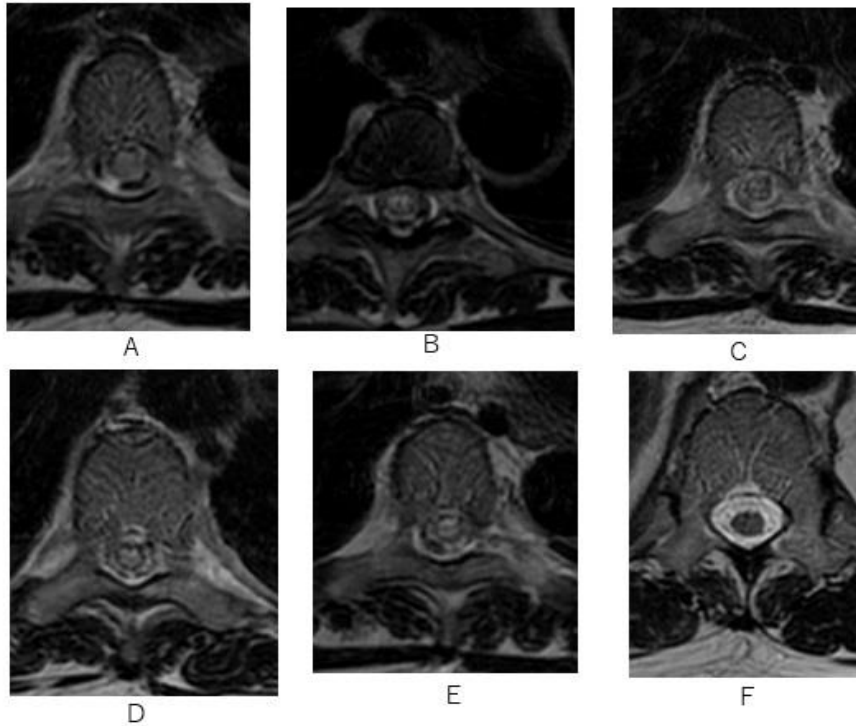


Fig.2 MR T2WI axial images depict a long lesion with high signal intensity in thoracic spinal cord beyond three vertebrae.

What is your imaging diagnosis ?

- 1. Spinal ependymoma**
- 2. Spinal cord infarction**
- 3. Multiple sclerosis**
- 4. Spinal syphilis**
- 5. Neuromyelitis optica spectrum disease**

answer

2024.4.5