

A Case of the 10 days

Case 383

A sixty-four-year-old female was transported to our hospital by an ambulance car for dizziness. Abdominal ultrasound and CT depicted abdomen mass (Fig.1). Further investigation was conducted using contrast-enhanced CT (Fig.2) and MRI (Figs 3-5).

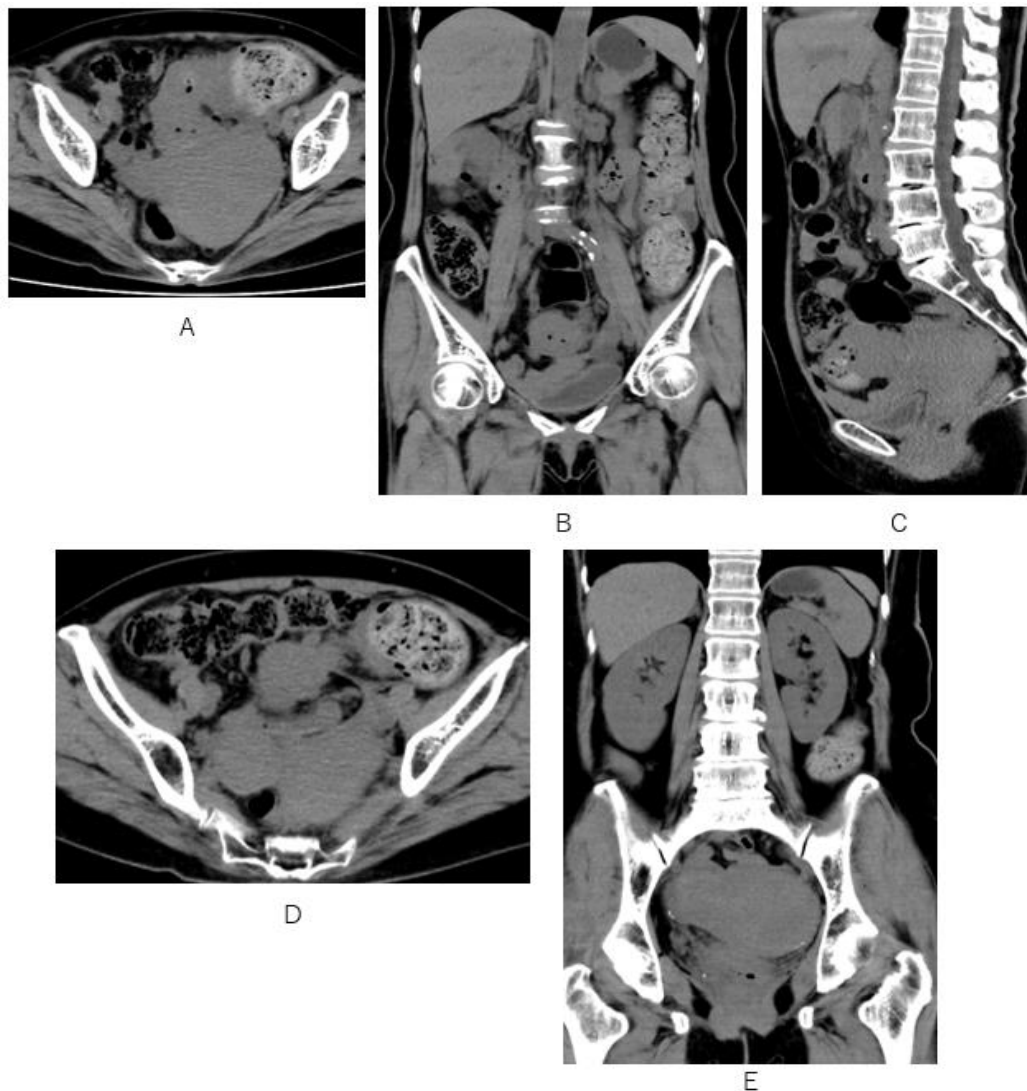


Fig.1 Marked mural thickening of sigmoid colon associated with storage of stool in the oral-sided colon on CT (A-C). Bilateral masses with homogeneous soft tissue attenuation are depicted on non-enhanced CT (D, E).

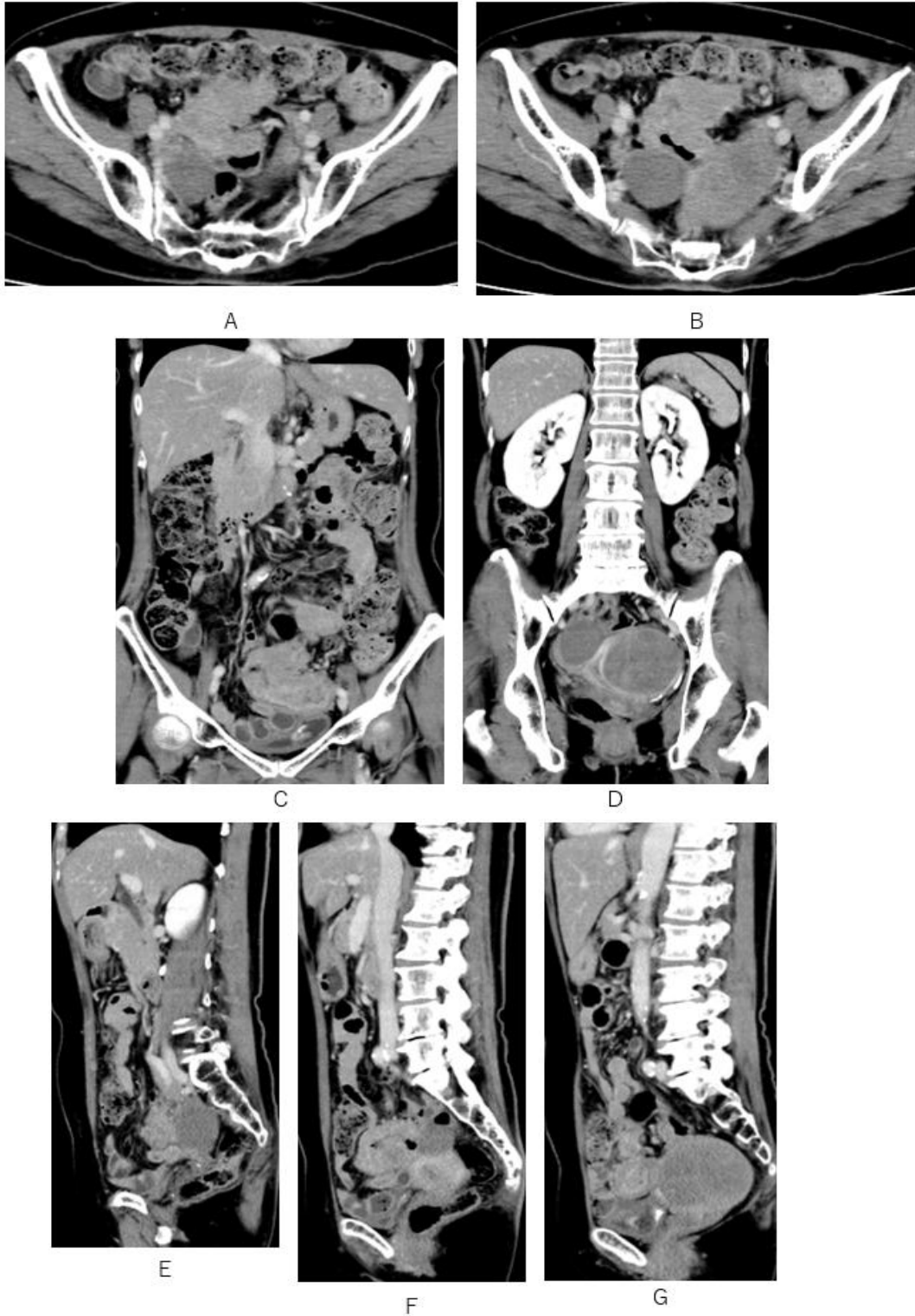


Fig.2 Contrast-enhanced CT depict a sigmoid colon mass with irregular-margin (A, C, F), and bilateral large masses with hypo-vascular opacity corresponded to ovaries (B, D, E, G).

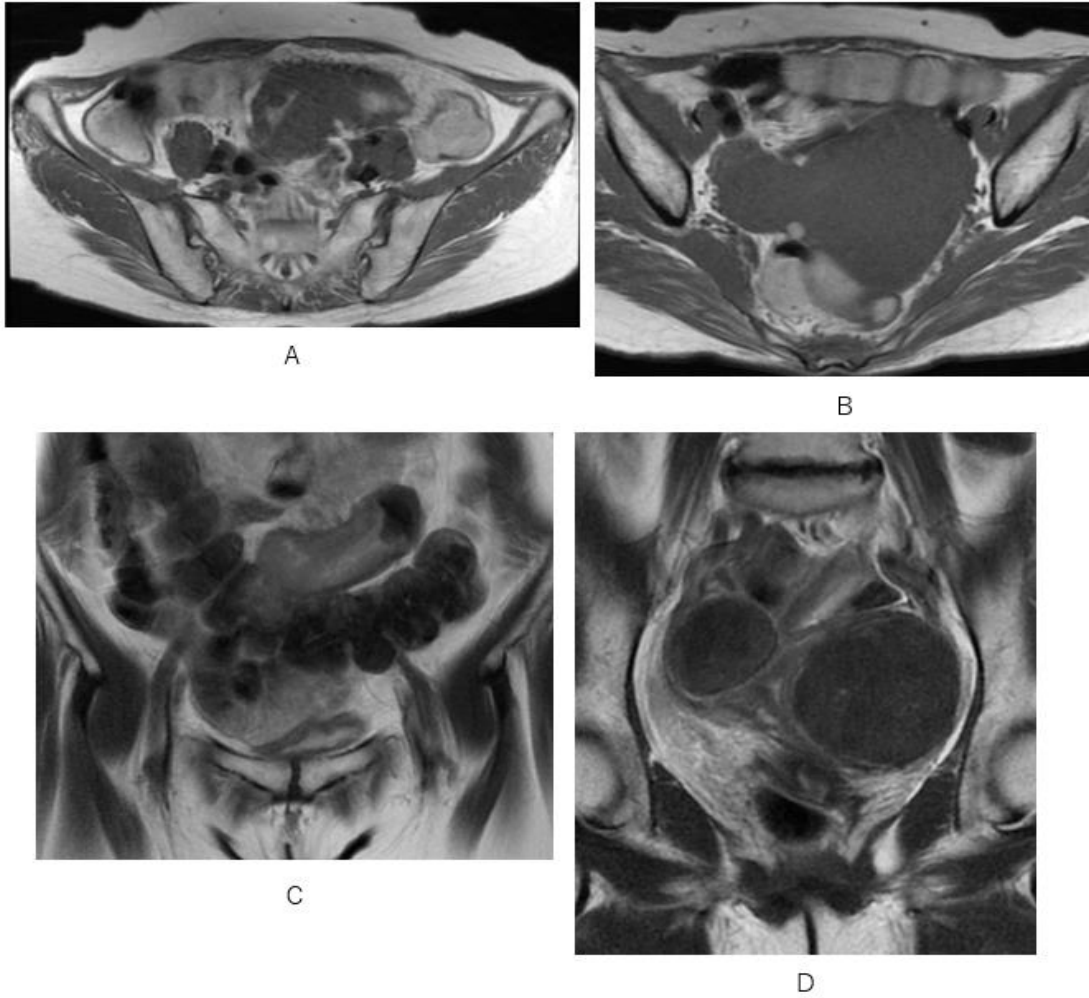


Fig.3 Sigmoid colon mass and bilateral masses corresponded to bilateral ovaries are depicted on T1WI (A, B), T2WI (C, D).

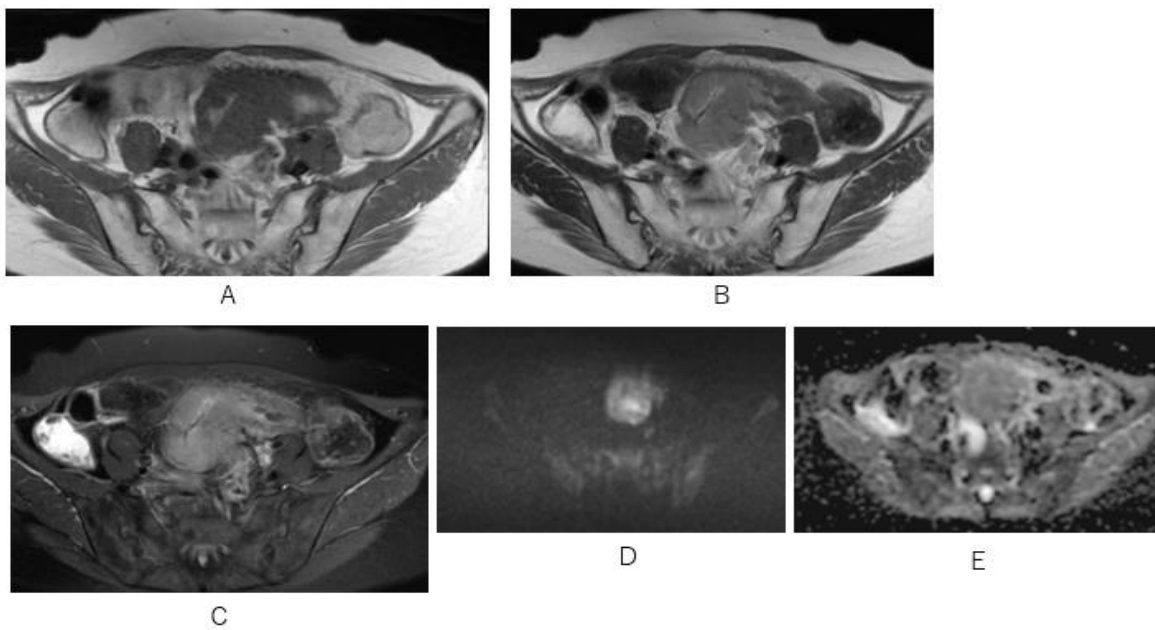


Fig.4 Sigmoid colon cancer is depicted on T1WI(A), T2WI(B), Fat suppression T2WI (C), Diffusion T2WI(D), and ADC mapping (E). ADC values of sigmoid colon cancer are 0.717-0.788.

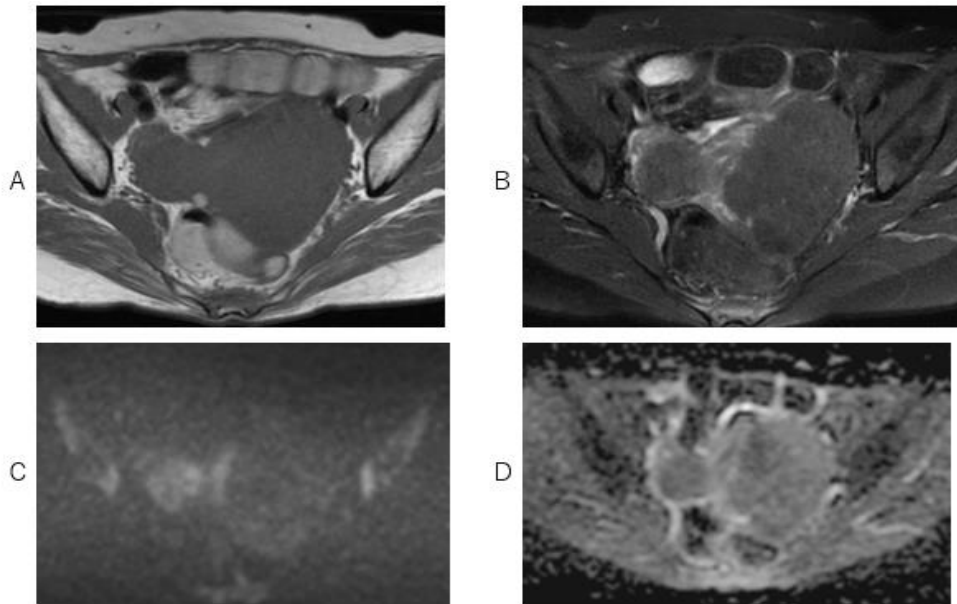


Fig. 5 Bilateral masses corresponded to bilateral ovaries are depicted on T1WI(A), fat-suppression T2WI (B), Diffusion WI(C), and ADC mapping (D). ADC value: Right 0.585 Left 0.419 – 0.641.

What is the imaging diagnosis?

1. Sigmoid colon cancer, myoma uteri
2. Sigmoid colon cancer, ovary fibroma
3. Sigmoid colon cancer, bilateral Krukenberg tumors
4. Sigmoid colon cancer, bilateral ovarian carcinoma

answer

2025.4.18