

A Case of the 10 days

Case 389

An-eighty-five-year-old female was transported to our hospital by an ambulance car for consciousness disorder and general edema. She had cognitive disorder probably due to Alzheimer disease. Laboratory test revealed white blood cells $19050/\text{mm}^3$, neutrophils 95%, CRP 19.84mg/dL, BUN 94.8mg/dL, Creatinine 4.5mg/dL. She took abdomen CT for further investigation (Figs.1-3).

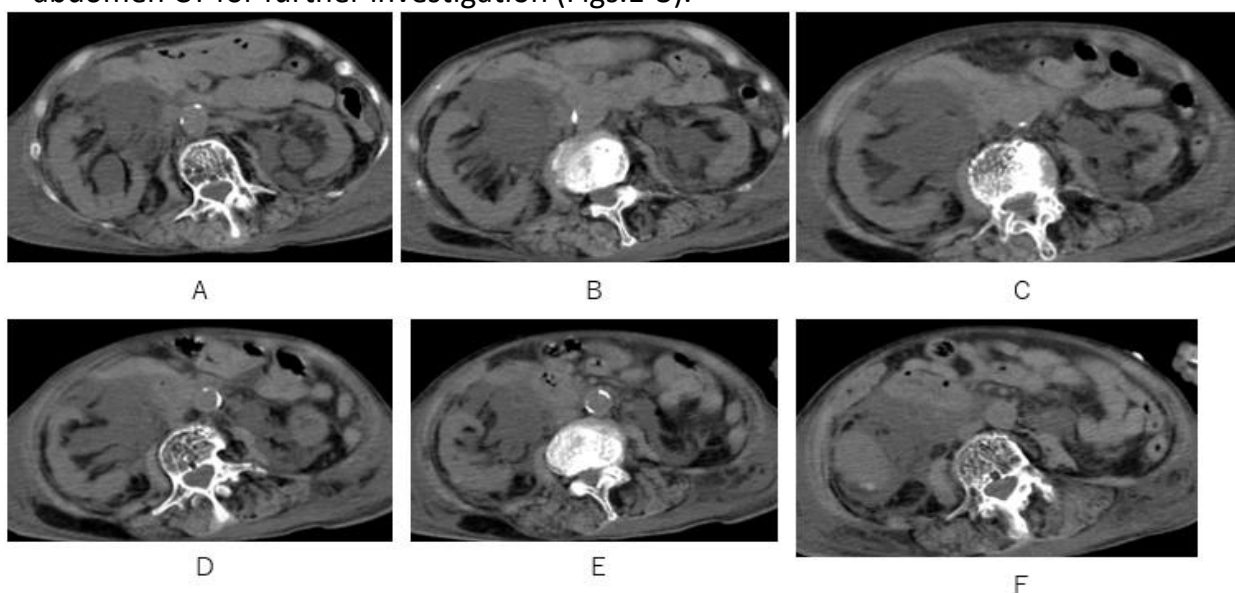


Fig. 1 Bilateral hydronephrosis (A-C) associated with leak of urine from right renal pelvis (B-F) is depicted on axial CT.

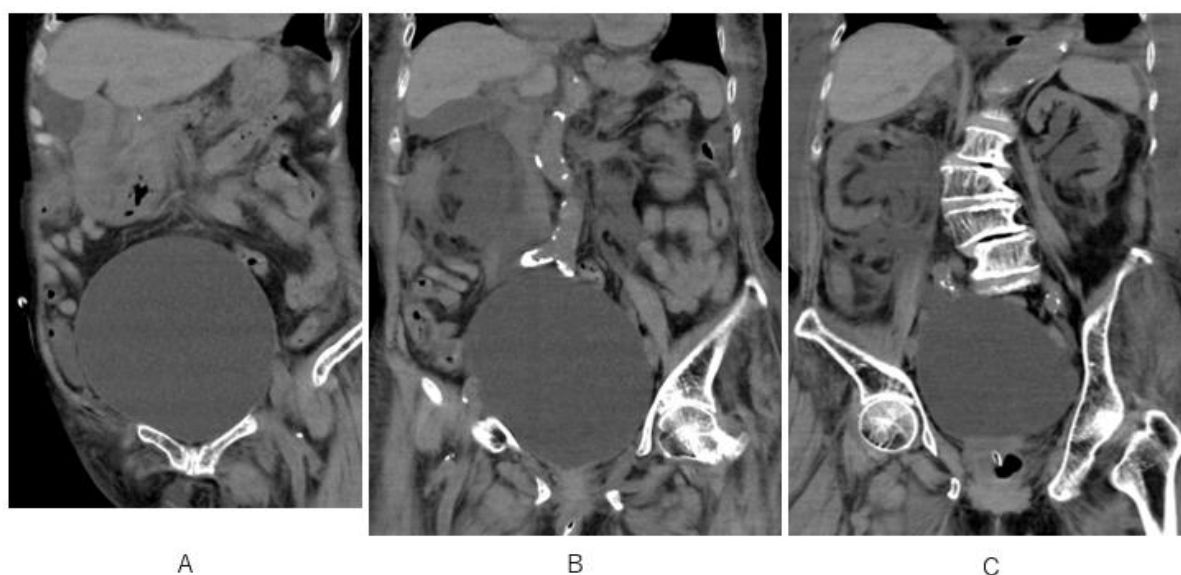


Fig.2 Fully distension of urinary bladder (A) and hydronephrosis of right kidney with urine leakage (B, C), are depicted on coronal CT.

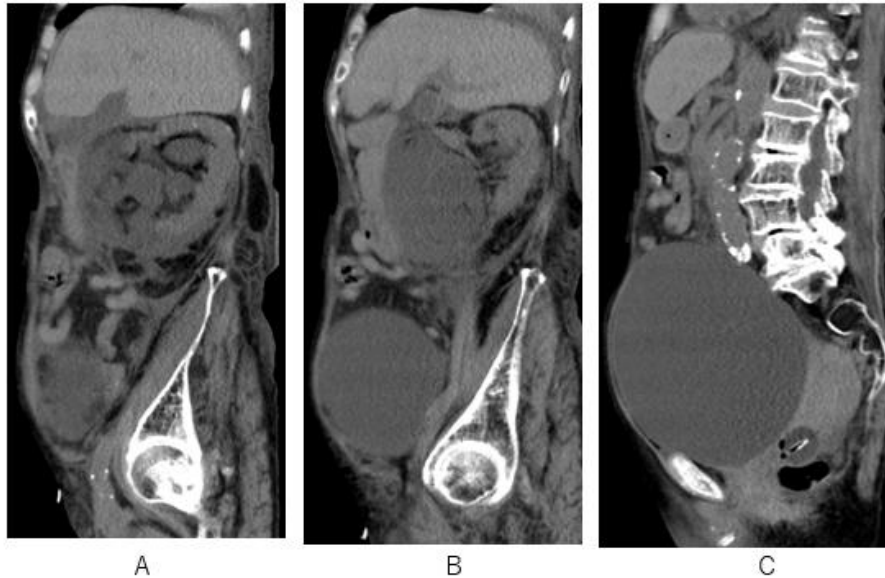


Fig.3 Hydronephrosis of right kidney (A), urine leakage in the perirenal space (A, B) are depicted on sagittal CT. Note fully distension of urinary bladder and a balloon catheter mis-inserted to uterus, probably inducing the blockage of inlet of urethra (C).

What is the imaging diagnosis?

1. Pyelonephritis
2. Pelvic tumor
3. Urinoma
4. Renal cell carcinoma
5. Hydronephrosis

answer

2025.6.6