

A Case of the 10 days

Case 390

This week, we present CT images of five cases with pulmonary failure including cardiac failure (Figs 1-5). Three of them experienced cardiac failure with pulmonary edema, while the other two cases experienced acute interstitial pneumonia.

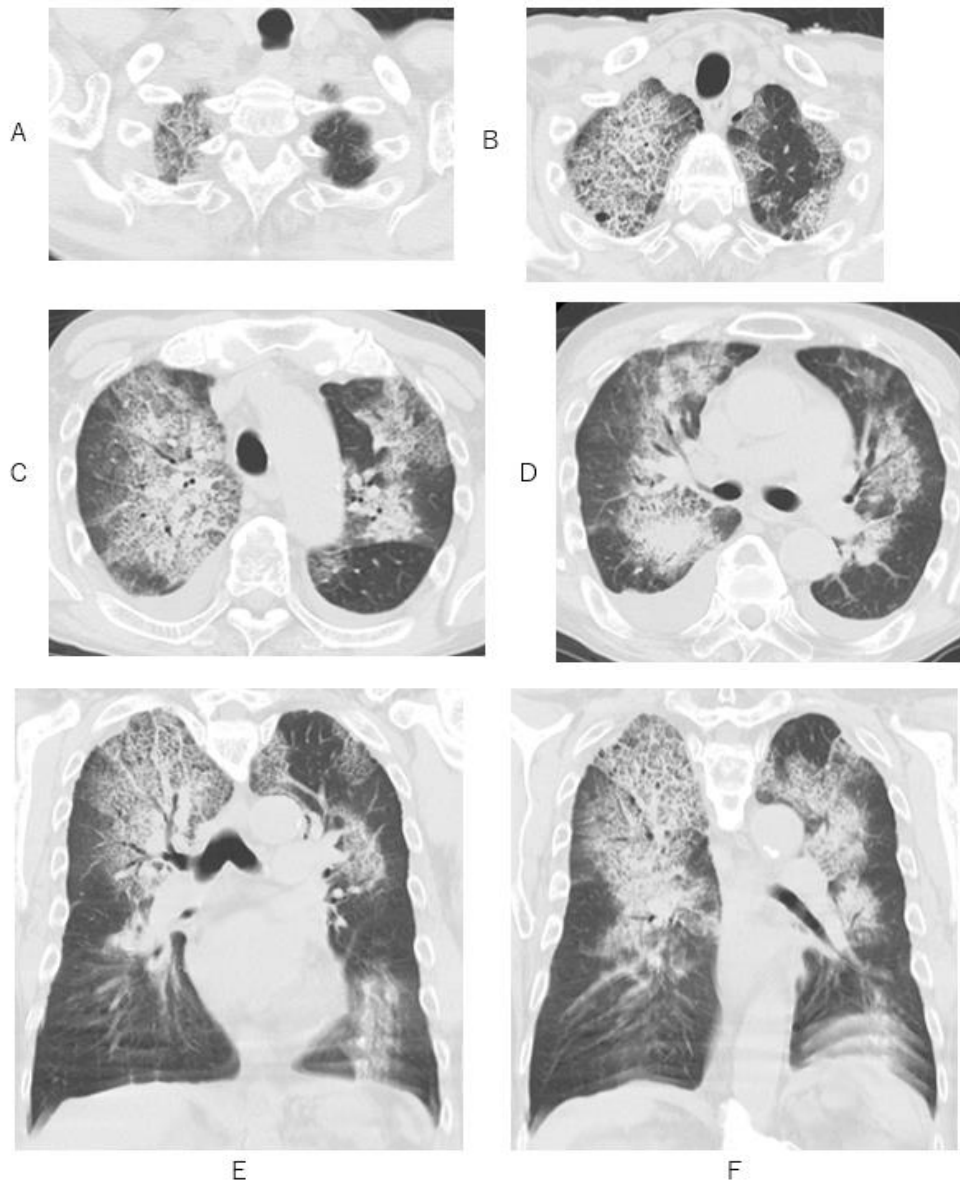


Fig.1 A seventy-seven-year-old male. Thickening of intralobular septum at both of apex and upper lobe and thick consolidation at hilum, are depicted on axial CT (A-D). Butterfly infiltration toward bilateral hilum is depicted on coronal CT (E, F). Note the diameter of upper lobe arteries is greater than that of upper lobe bronchus.

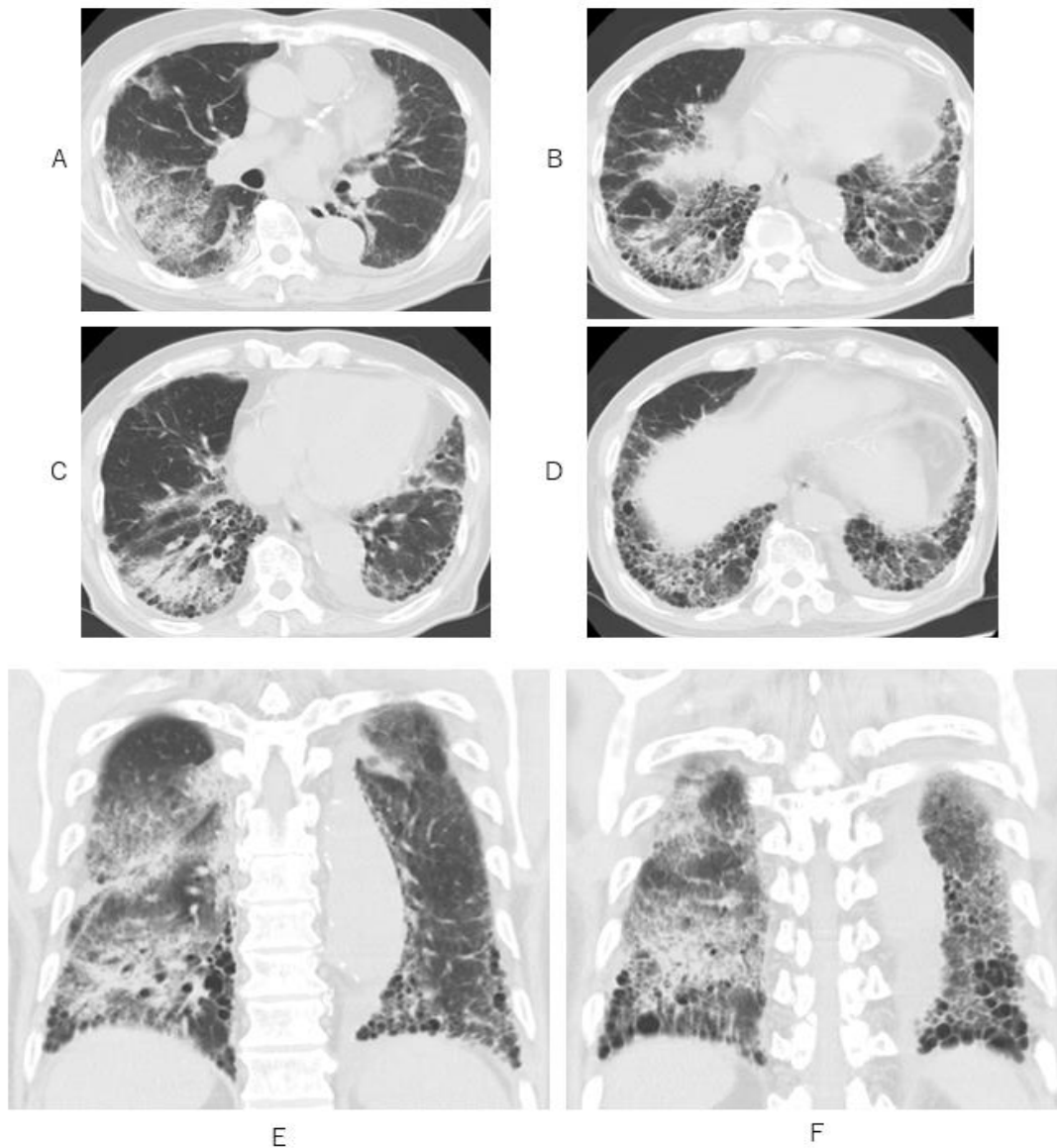


Fig.2 A seventy-nine-year-old female. Ground glass and reticular consolidation are depicted predominantly more at lower lobes rather than upper lobes on axial CT (A-D) and coronal (E, F) CT.

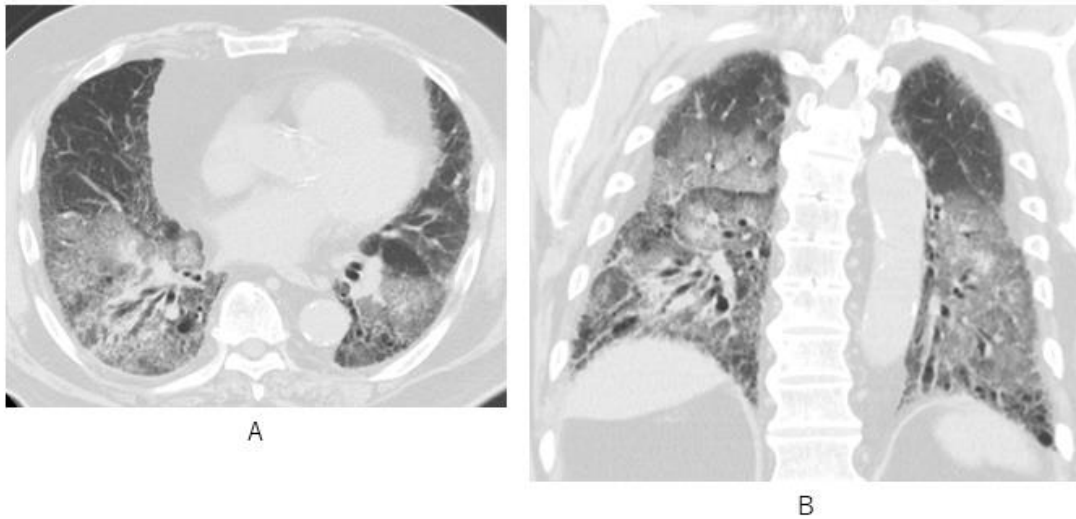


Fig. 3 An eighty-five-year male Bilateral ground glass opacity predominantly at lower lobes rather than at lower lobes are depicted on axial CT and coronal CT.

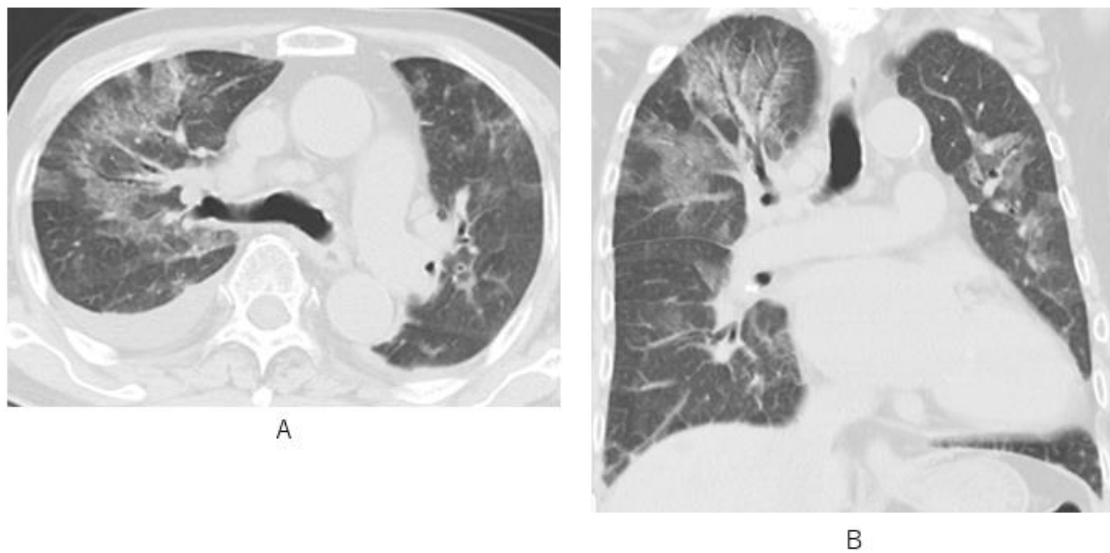


Fig.4 An eighty-four-year male. Consolidation of bilateral upper lung area extends to hilum on CT (A, B).

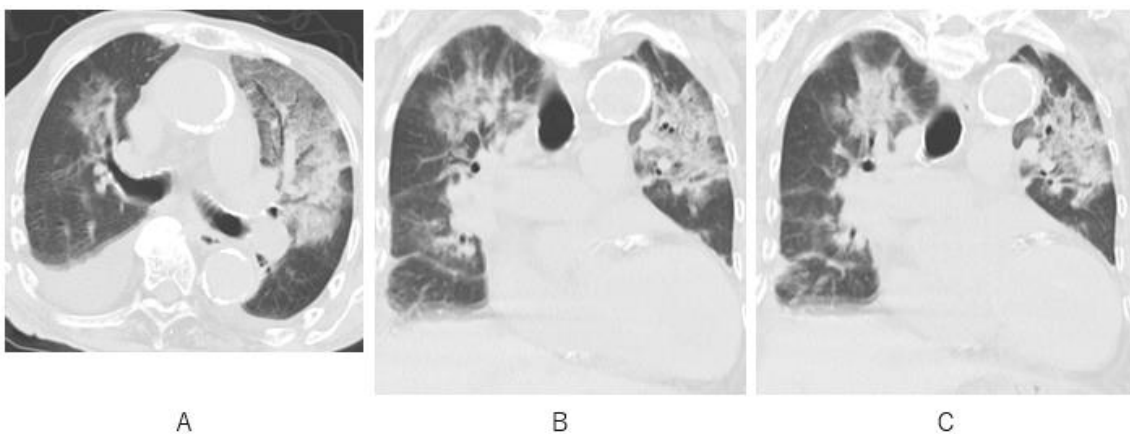


Fig. 5 An eighty-four-year male. Butterfly consolidation is depicted on CT (A-C). Note that diameter of upper pulmonary artery is greater than that of upper bronchus (A, C).

Based on CT images, what cases with figure numbers are caused by cardiac failure?

A. 1,2,3

B. 1,4,5

C. 2,3,4

D. 2,4,5

E. 3,4,5

answer

2025.6.13