

## A Case of the 10 days

### Case 391

A sixty-four-year-old male presented in our hospital for a pimple in the left buccal membrane. He bit it last month and, thereafter, he realized its presence. Medical findings revealed a dark colored, elastic hard growth of 8x10mm in size. He took face MRI for further investigation (Figs. 1-3).

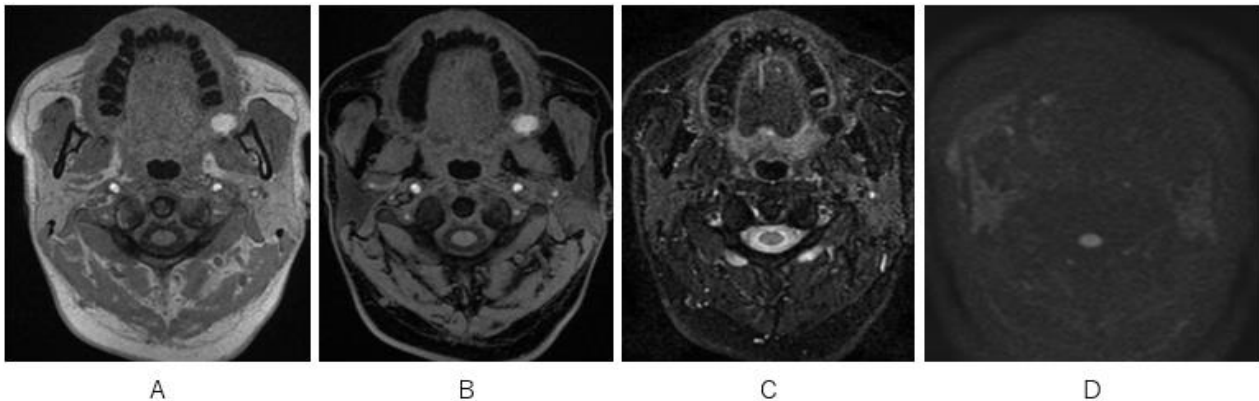


Fig.1 A nodular lesion at left buccal membrane is depicted as high signal intensity on axial T1WI (A), axial fat suppression T1WI(B) and with low signal intensity on fat suppression axial T2WI (C). The nodule is not depicted as high signal intensity on Diffusion WI (D).

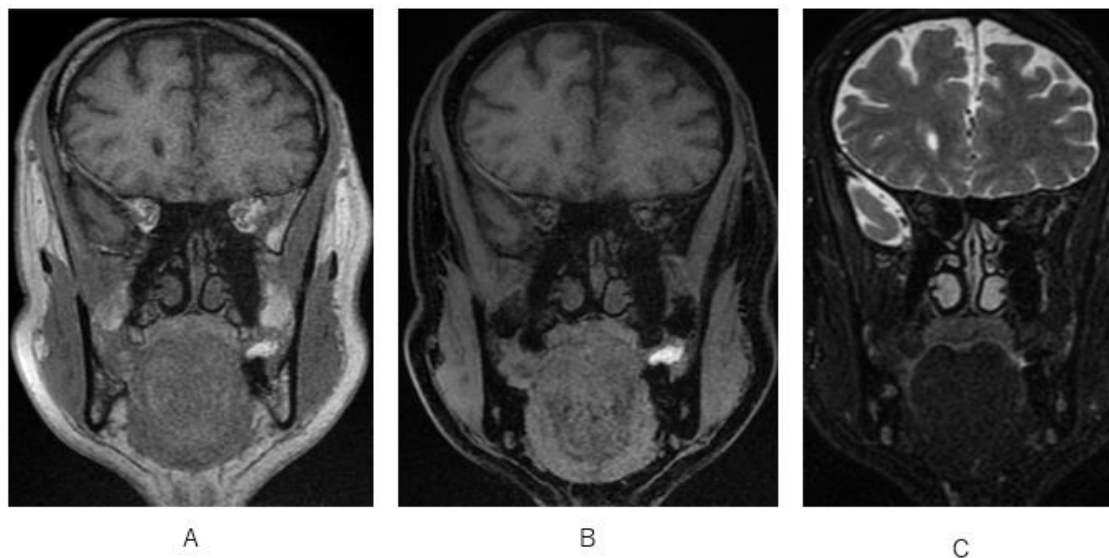
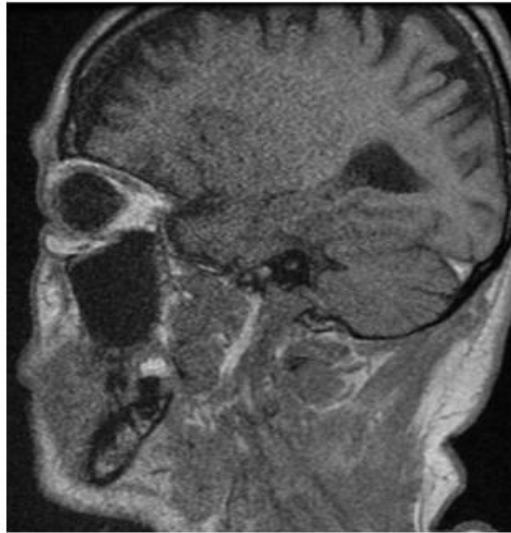
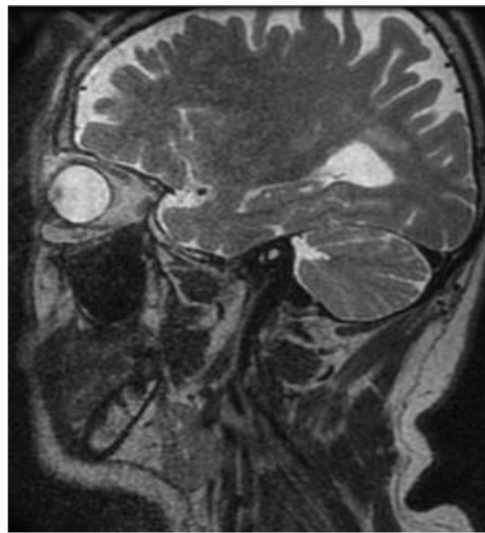


Fig.2 A nodular lesion at left buccal membrane is depicted as high signal intensity on coronal T1WI (A) and coronal fat suppression T1WI (B). Note a lesion is not clearly depicted on coronal fat suppression T2WI (C).



A



B

Fig.3 A nodule is depicted as high signal intensity on sagittal T1WI but not clearly depicted on sagittal fat suppression T2WI probably because of low signal intensity.

What is an imaging diagnosis?

1. Venous malformation
2. Capillary hemangioma
3. Mucoepidermoid carcinoma
4. Adenoid cystic carcinoma
5. Malignant melanoma

answer

2025.6.20