

A Case of the 10 days

Case 392

A seventy-six-year-old male who had received chemotherapy for advanced gastric cancer of Stage IIIb presented in our hospital because of cognition disorder. He was found in the car at the mountain far from his home because of running out gas/petrol probably he could not come home by himself. He received brain CT. The chronological findings on brain CT were compared (Figs. 1-3).

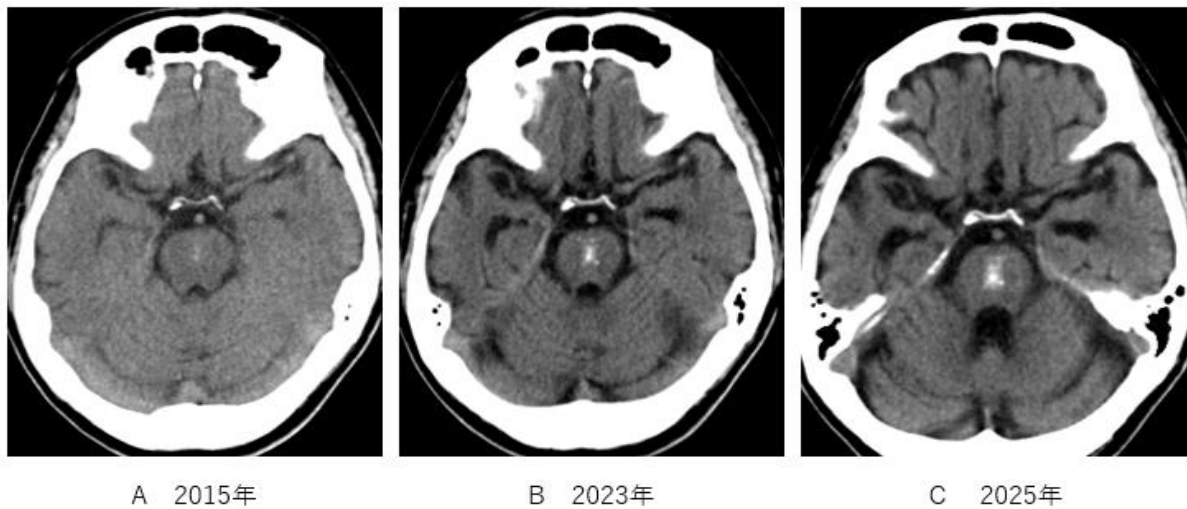


Fig.1 Chronological brain CT over ten years depict the volume of medial part of temporal lobe corresponded to amygdala and hippocampus. Ten years later, atrophic changes of amygdala are depicted on axial brain CT (A-C).

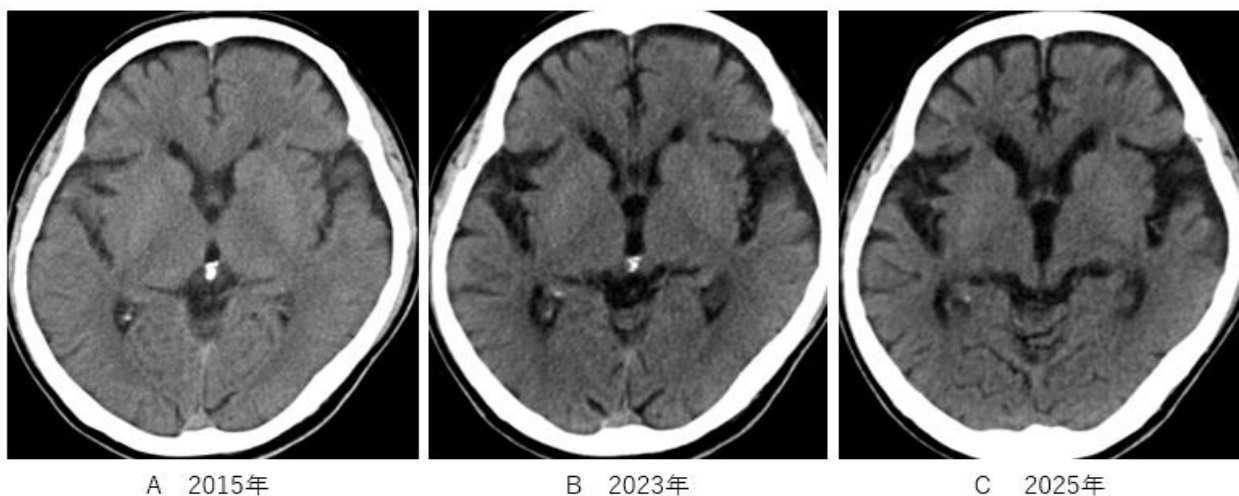


Fig. 2 Chronological brain CT over ten years depict the volume of lateral part of temporal lobe corresponded to insula and lids. Ten years later, dilatation of bilateral Sylvian fissures is depicted on axial brain CT (A-C) indicative of atrophy of insula and lids.

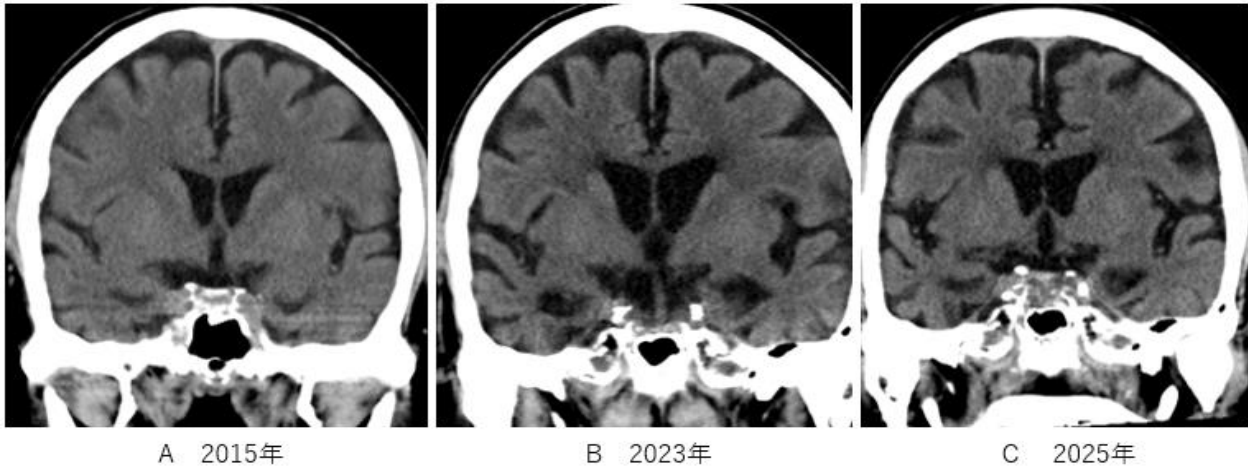


Fig. 3 Chronological brain CT over ten years depict the volume of lateral and medial parts of temporal lobe corresponded to amygdala and insula. Ten years later, dilatation of bilateral Sylvian fissures and sulci is depicted on coronal brain CT (A-C) indicative of atrophy of insula and lids.

What is an imaging diagnosis?

1. Lewie bodies dementia
2. Frontal lobe/Lateral lobe dementia
3. Alzheimer dementia
4. Brain vessels dementia

answer

2025.6.27