

A Case of the 10 days

Case 393

A forty-two-year-old female presented in our hospital for left swollen painful chin. She realized it more than seventeen years before. The lesion is diagnosed with hemangioma or vessel anomaly. The lesion was more growing and painful, hoping to receive sclerotherapy. Before treatment, she took face MRI for further investigation (Figs.1-3).

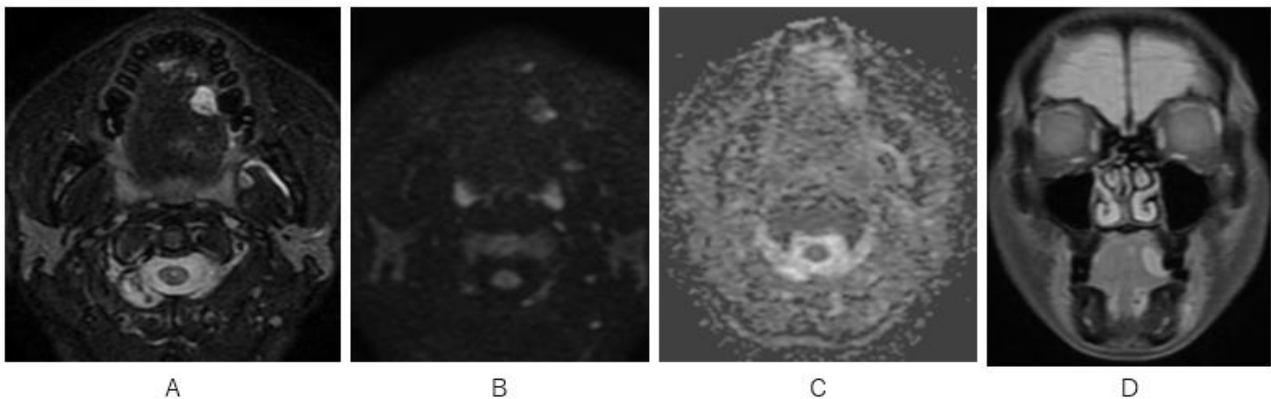


Fig.1 A lesion at left frontal area of tongue is depicted high signal intensity on fat suppression T2WI (A), mild high signal intensity on Diffusion T2WI (B), not lowering of ADC value of 2.045 (C), and high signal intensity on coronal T2WI(D).

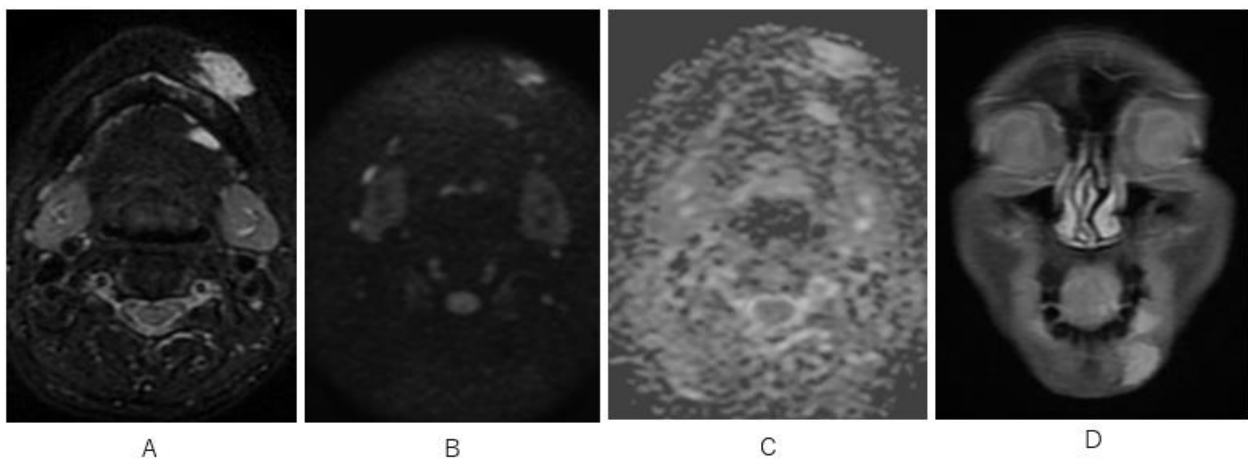


Fig.2 Two lesions at left mandibular subcutaneous tissue and left gingiva, respectively are both depicted high signal intensity on fat suppression T2WI (A), mild high signal intensity on Diffusion T2WI(B), not lowering of ADC value (left mandibular subcutaneous tissue ADC 2.352)(C), and high signal intensity on coronal T2WI(D).

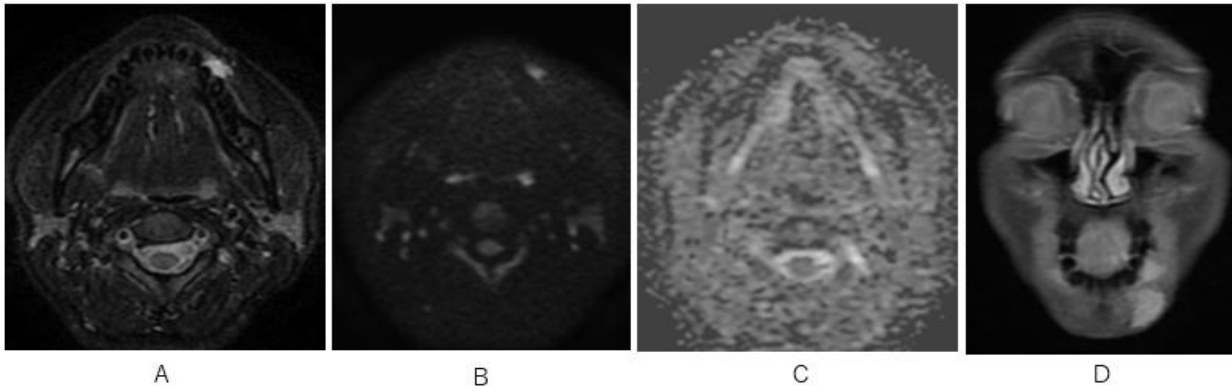


Fig.3 A lesion at left gingiva is depicted high signal intensity on fat suppression T2WI (A), mild high signal intensity on Diffusion T2WI (B), not lowering of ADC value of 1.601(C), and high signal intensity on coronal T2WI(D).

What is an imaging diagnosis?

1. Aneurysm
2. Varices
3. Artero-venous fistula
4. Capillary hemangioma
5. Venous hemangioma (cavernous hemangioma)

answer

2025.7.4