

A Case of the 10 days

Case 398

An eighty-year-old male presented in our hospital for fever, dyspnea and motile difficulty. He lived alone by himself. When his sister visited him, she found him unable to sit by himself. She called the municipal care center, inducing that an ambulance car carried him to our hospital because he had fever and hypoxia. He took body CT (Figs 1, 2).

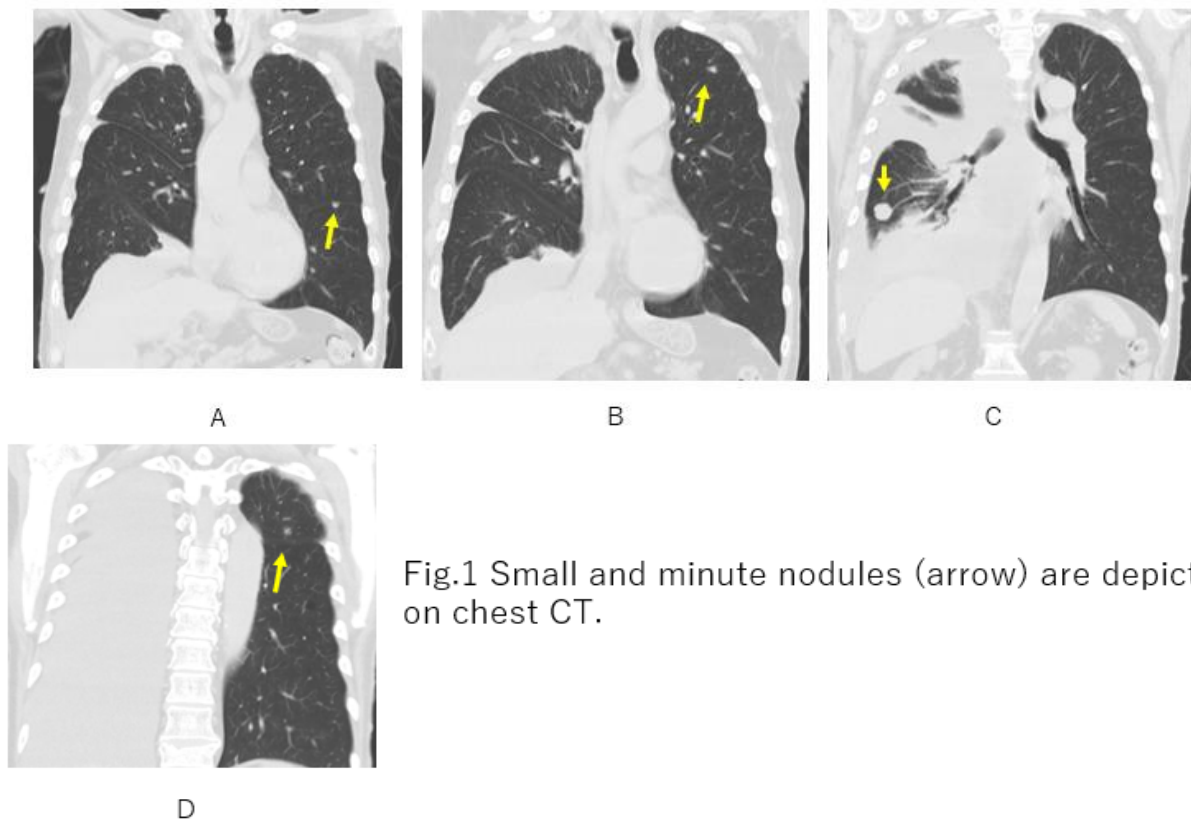


Fig.1 Small and minute nodules (arrow) are depicted on chest CT.

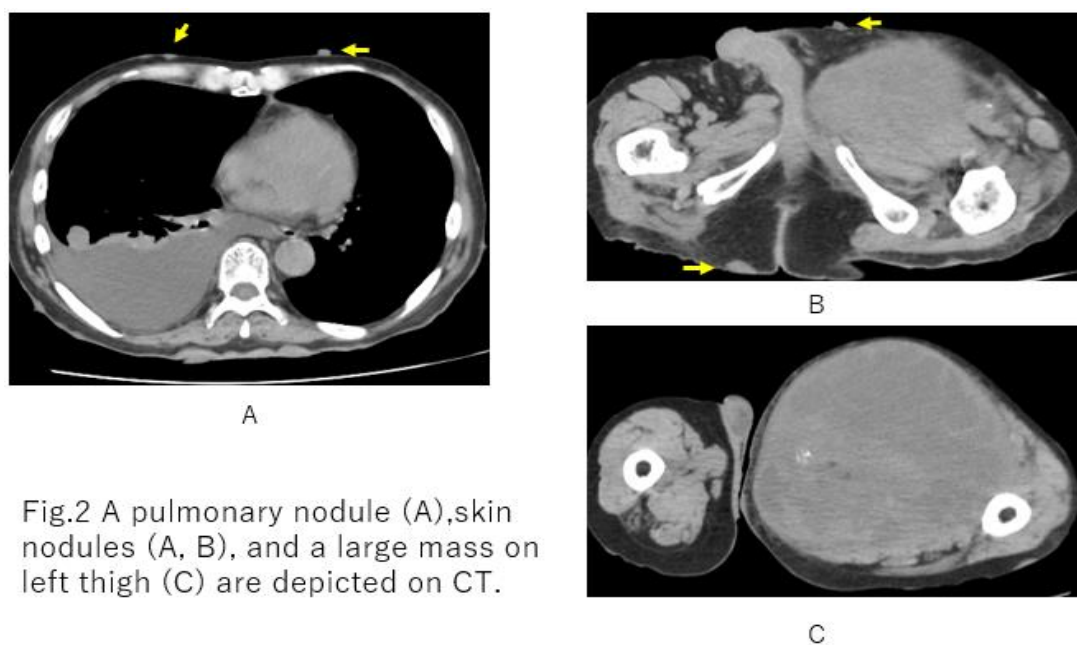


Fig.2 A pulmonary nodule (A), skin nodules (A, B), and a large mass on left thigh (C) are depicted on CT.

What is an imaging diagnosis?

1. Metastatic lung tumors
2. Pleural effusion
3. Von Recklinghausen disease
4. Malignant nerve sheath tumor
5. All

answer

2025.8.8