

# A Case of the Week

## Case 399

A seventy-two-year-old male presented in our hospital with a reference letter from a local clinic. It said that he had a spinal cord disorder, suspicious of brain ischemic attack or brain myeline disease. He took brain MRI to check whether the responsible diseases are presence or absence and to differentiate them (Figs 1, 2).

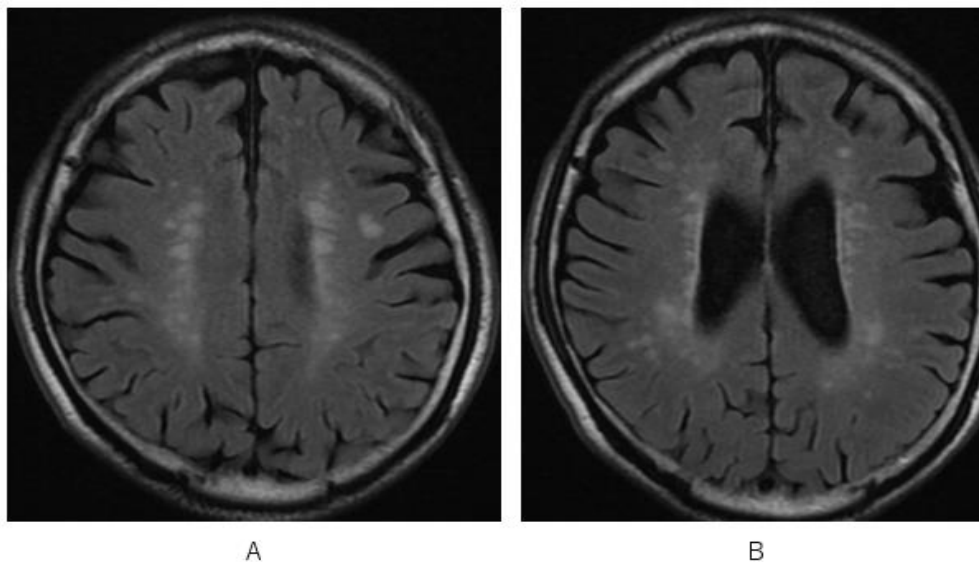


Fig.1 Multiple high signal intensities with 90-degree angle to lateral ventricles (A, B) and at U fibers are depicted on axial FLAIR MRI.

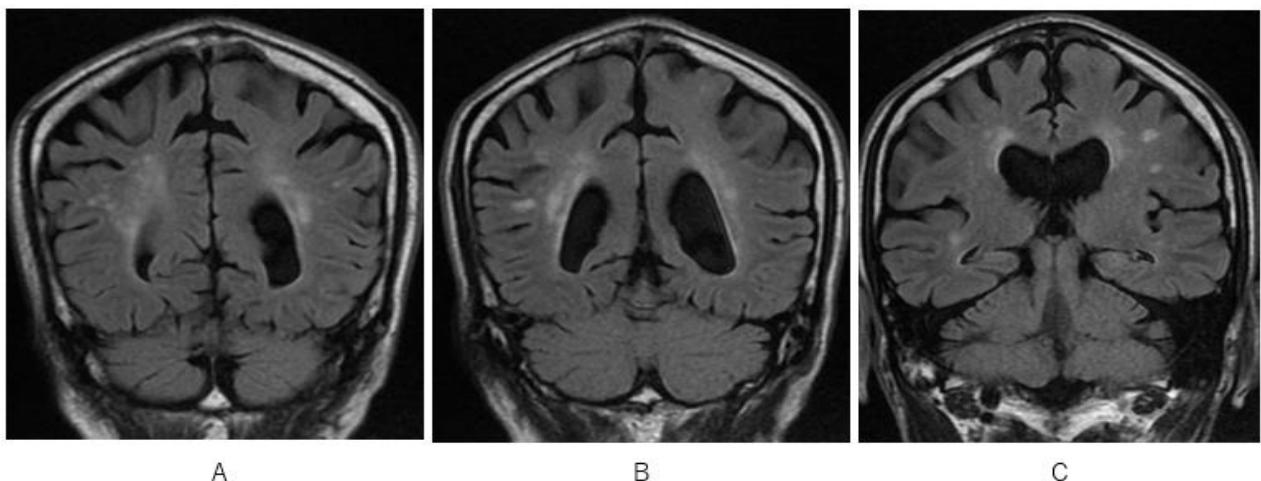


Fig.2 High signal intensities along with lateral ventricle and at U fiber are depicted on coronal FLAIR MRI.

## What is an imaging diagnosis?

---

1. Brain infarction
2. Brain hemorrhage
3. Metastatic brain tumors
4. Aging glymphatic flow delay
5. Multiple sclerosis

answer

2025.8.15