

A Case of the Week

Case 400

A seventy-two-year-old male presented in our hospital with a reference letter from a local clinic. It said that he had a spinal cord disorder, suspicious of brain ischemic attack or brain myeline disease. He took brain MRI to check whether the responsible diseases are presence or absence and to differentiate. A seventy-seven-year-old male presented in our hospital for constipation and positive stool occult blood test. He was a survivor with more than ten years after pancreas resection for pancreas cancer. Further, he was receiving hormone therapy for prostate cancer. He took contrast-enhanced CT for further examination (Figs 1, 2).

Fig.1 Transverse colon varices from peri-splenic vein to inferior phrenic vein is depicted on colored volume rendered imaging.

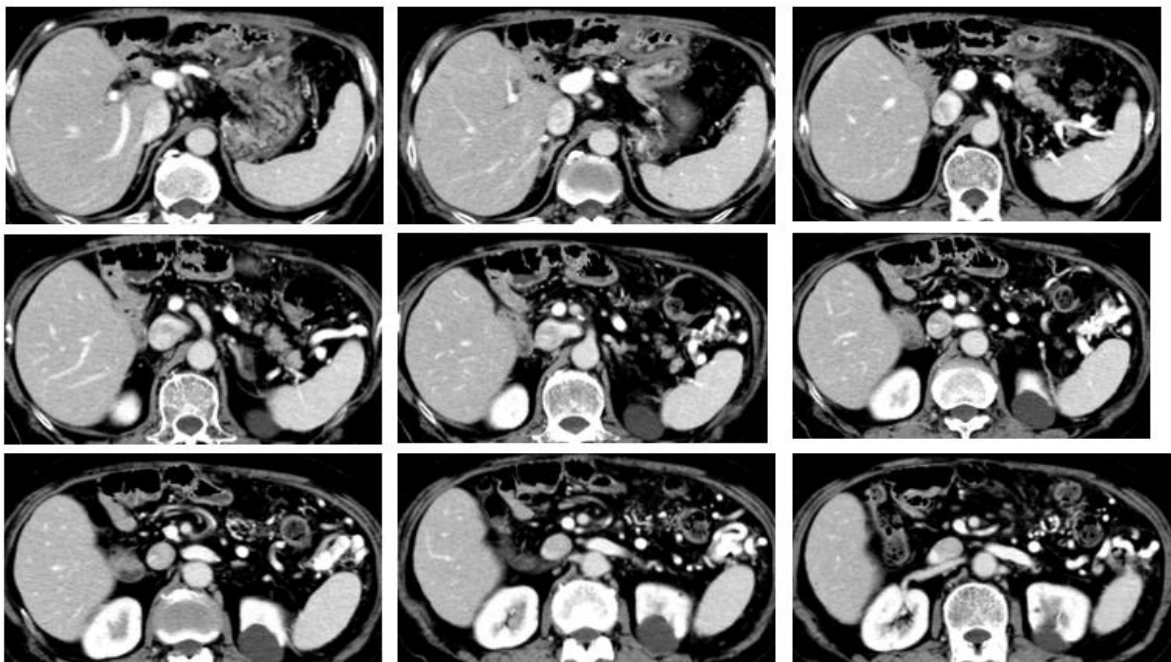
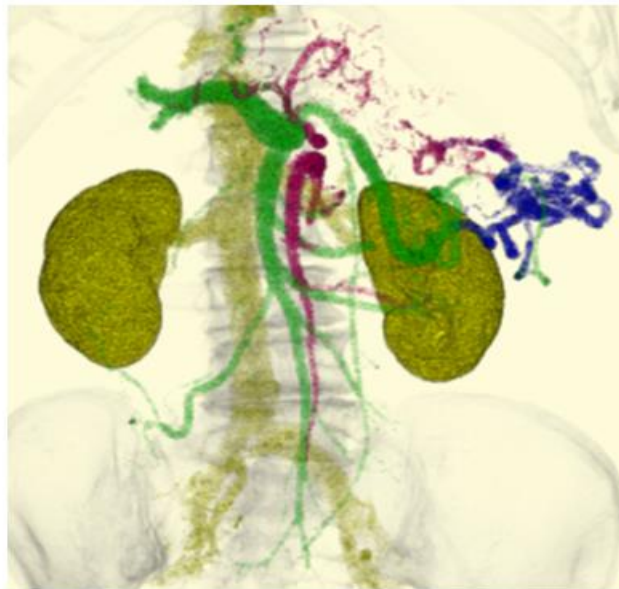


Fig. 2 A transverse colon varices through shunt from splenic vein to inferior mesenteric vein is depicted on contrast-enhanced axial images.

What is an imaging diagnosis?

1. Colon hemangioma
2. Colon villous adenoma
3. Colon arteriovenous malformation
4. Colon varices

answer

2025.8.22