

A Case of the Week

Case 401

A sixty-six-year-old male presented in our hospital for abdominal pain and suspicious hematemesis. He experienced intermittent epigastric pain for these three days. He smoked 18 cigarettes a day and drank alcohol at night every day. He received endoscopic gastro-duodenal investigation, clarifying no evidence of origin of hematemesis. He took contrast-enhanced CT for further examination (Figs 1, 2).

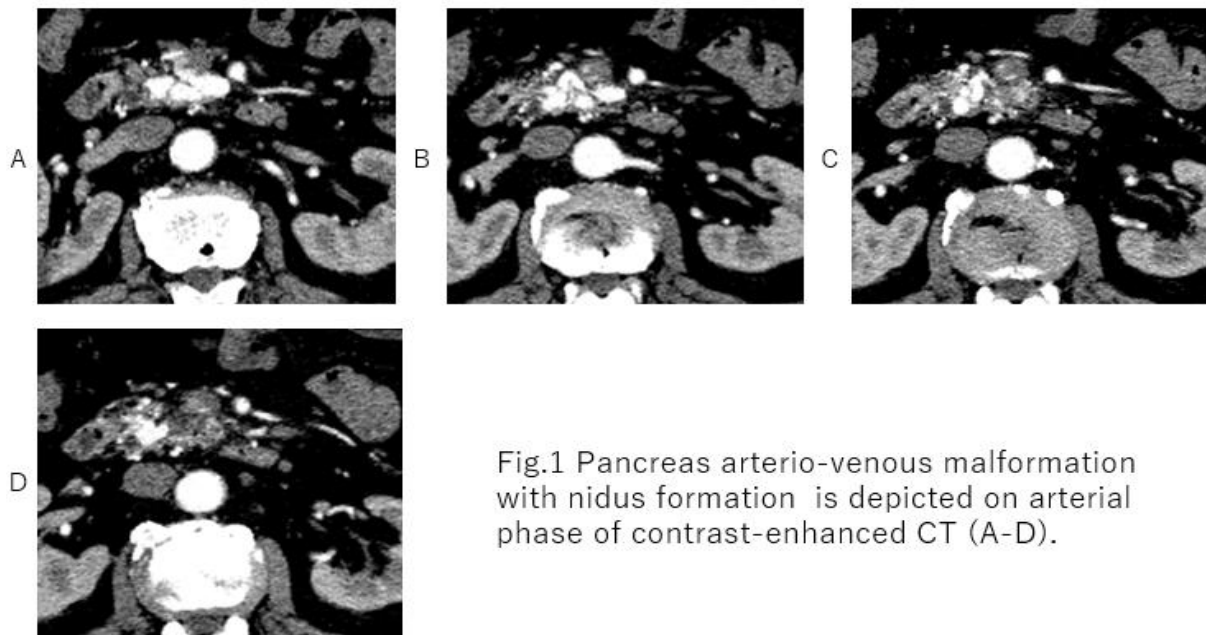


Fig.1 Pancreas arterio-venous malformation with nidus formation is depicted on arterial phase of contrast-enhanced CT (A-D).

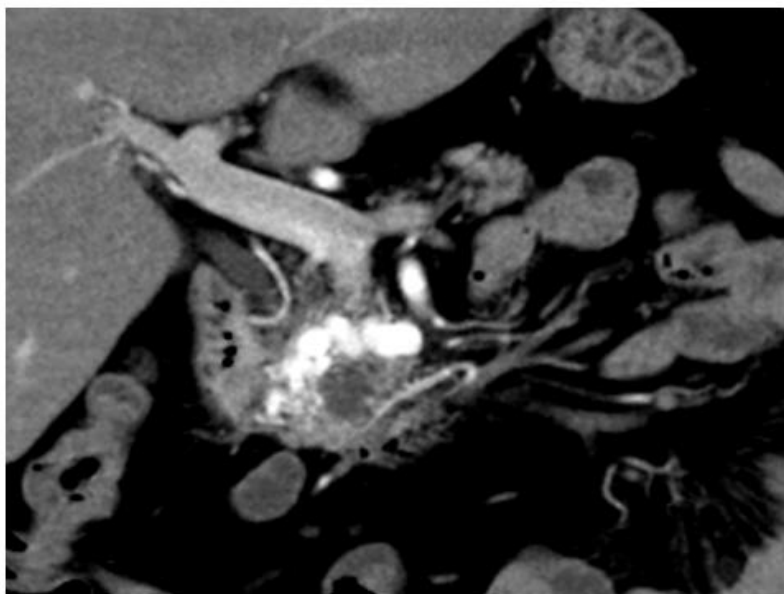


Fig. 2 Pancreas head to body arterio-venous malformation is depicted on a coronal image of arterial phase of contrast-enhanced CT.

What is an imaging diagnosis?

1. **Pancreas cancer**
2. **Pancreas serous cystadenoma**
3. **Pancreas arterio-venous malformation**
4. **Pancreas arcade aneurysm**
5. **Pancreas lymphoepithelial tumor**

answer

2025.8.29