

# A Case of the Week

## Case 402

An eighty-three-year-old male presented in our hospital for persistent and increasing abdominal pain. His abdominal pain began two days before and this morning, abdominal pain increased like that needles pierced abdomen. He received cholecystectomy and partial gastrectomy in the past. He took abdomen CT for further investigation (Figs 1-8).

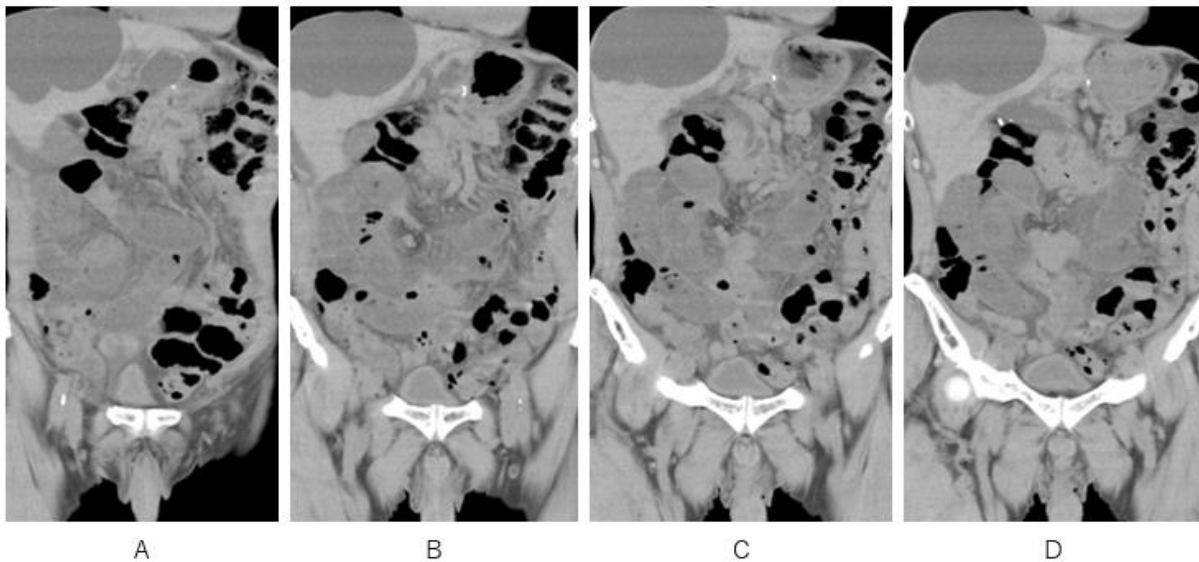


Fig.1 There are images (A-D)saying strangulation hernia. Can you find out the findings ?

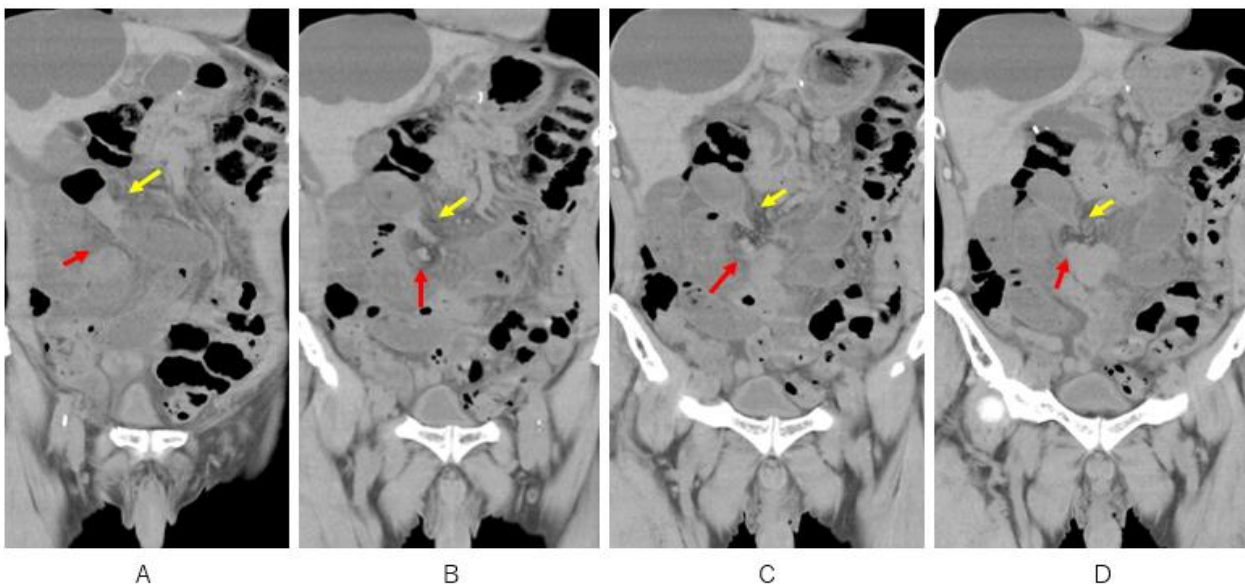


Fig.2 A yellow arrow indicates a beak sign saying stenosis between oral dilated small bowel and dilated closed loop small bowel (A-D). A red arrow indicates a dot sign saying stenosis between dilated closed loop small bowel and anal constrictive small bowel (A-D).

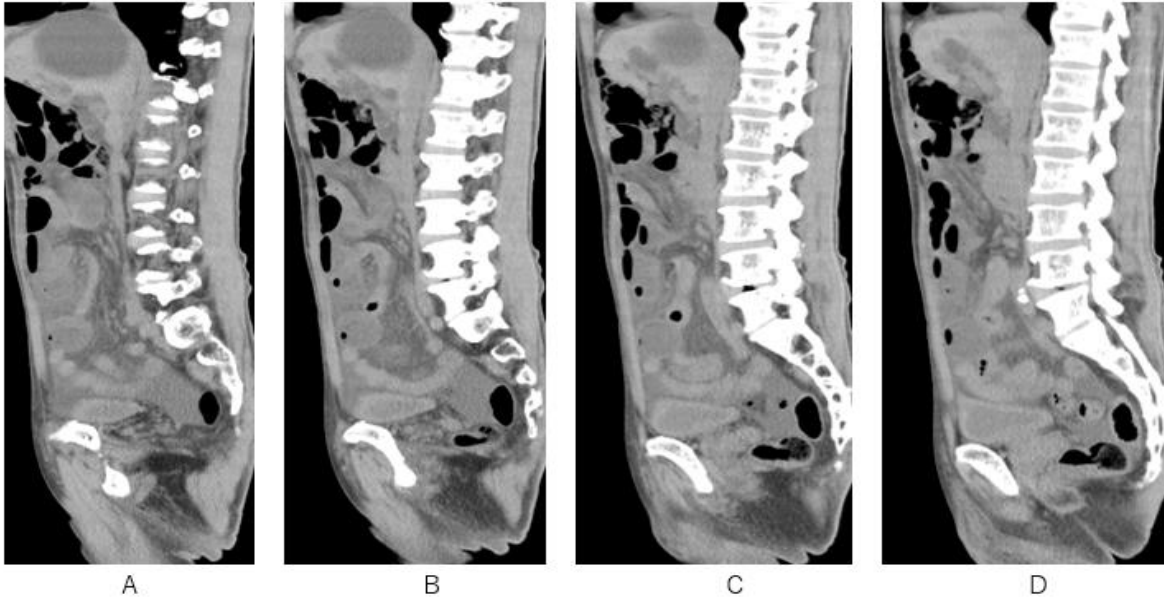


Fig. 3 There are images (A-D) saying strangulation hernia. Can you find out the findings ?

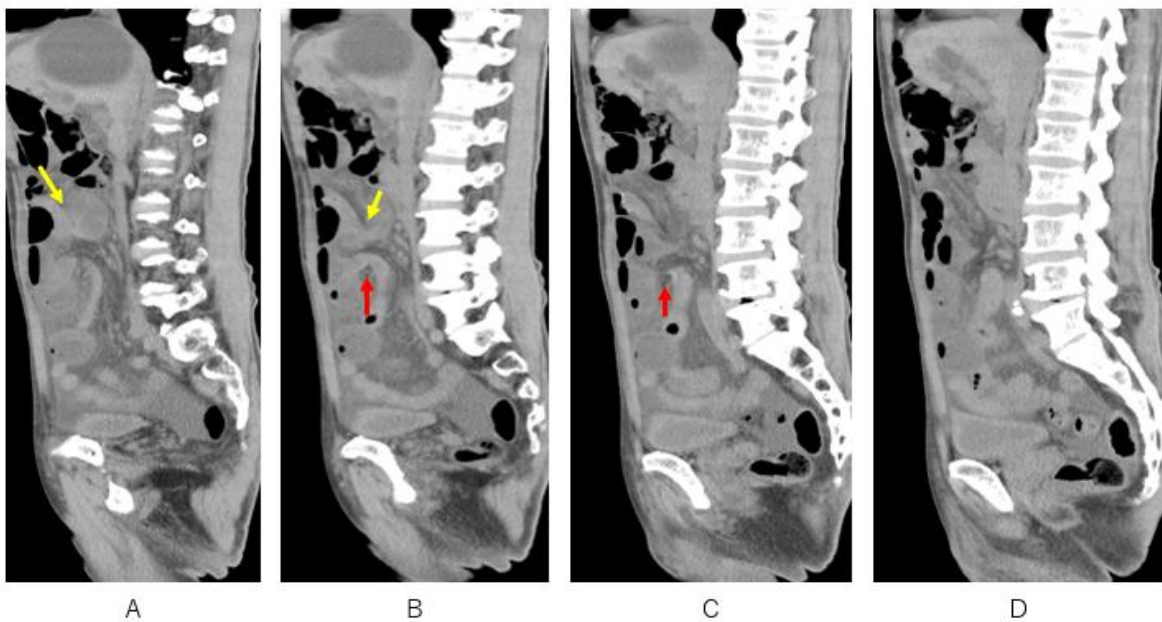


Fig.4 A yellow arrow indicates a beak sign saying stenosis between oral dilated small bowel and dilated closed loop small bowel. A red arrow indicates another beak sign saying stenosis between dilated closed loop small bowel and anal constrictive small bowel.

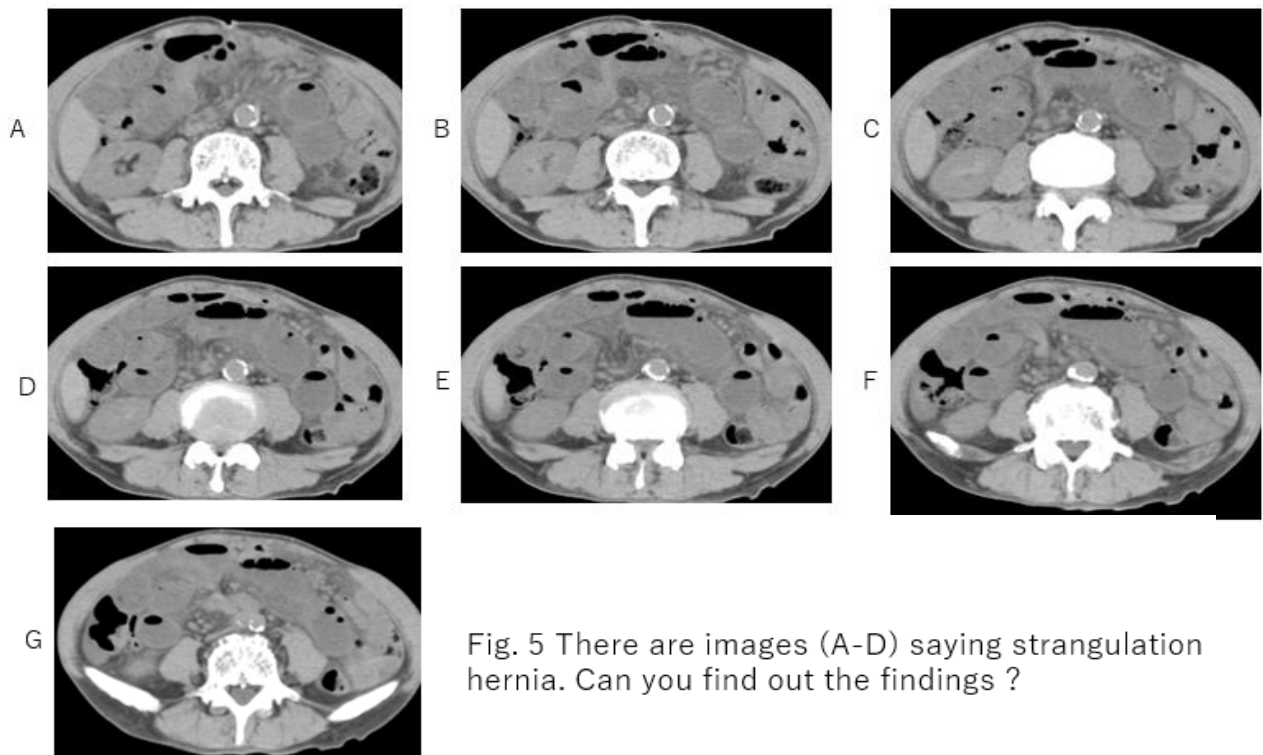


Fig. 5 There are images (A-D) saying strangulation hernia. Can you find out the findings ?

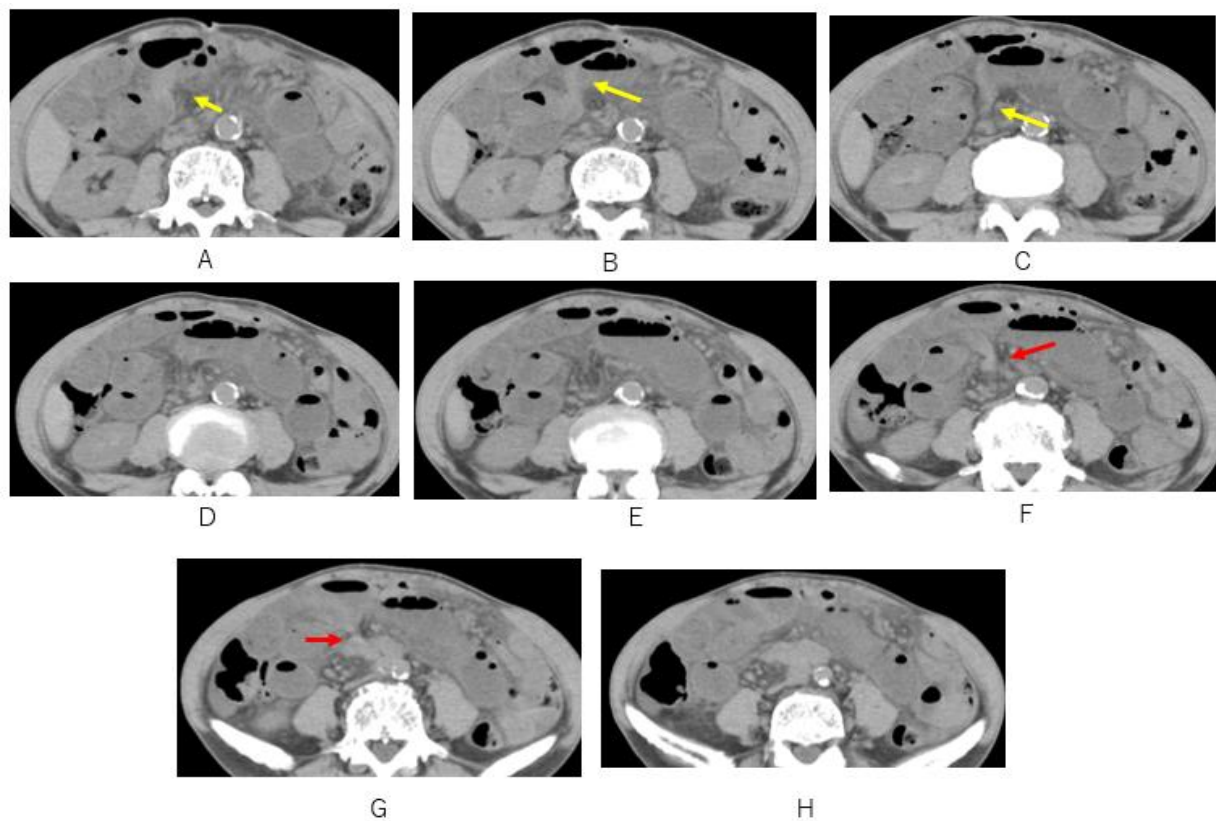


Fig.6 A yellow arrow indicates a beak sign saying stenosis between oral dilated small bowel and dilated closed loop small bowel (A-C). A red arrow indicates another beak sign saying stenosis between dilated closed loop small bowel and anal constrictive small bowel (F, G).



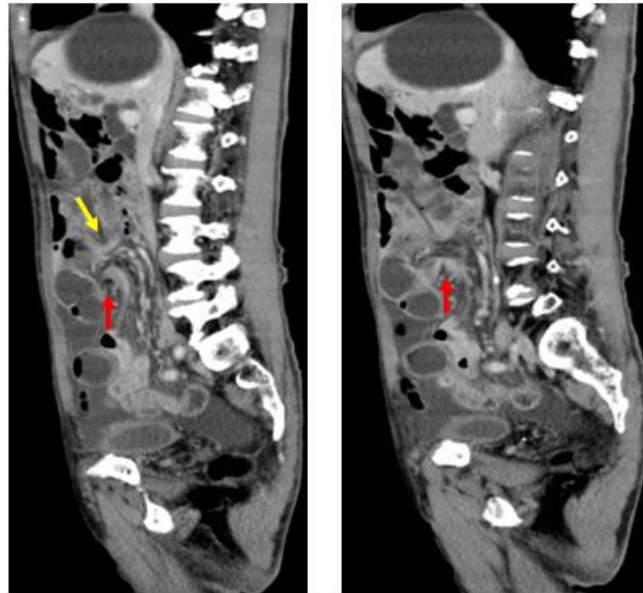


Fig.7 There two beak sign;

A yellow arrow between oral dilated small bowel and dilated closed loop small bowel (A, B): a red arrow indicates another beak sign saying stenosis between dilated closed loop small bowel and anal constrictive small bowel

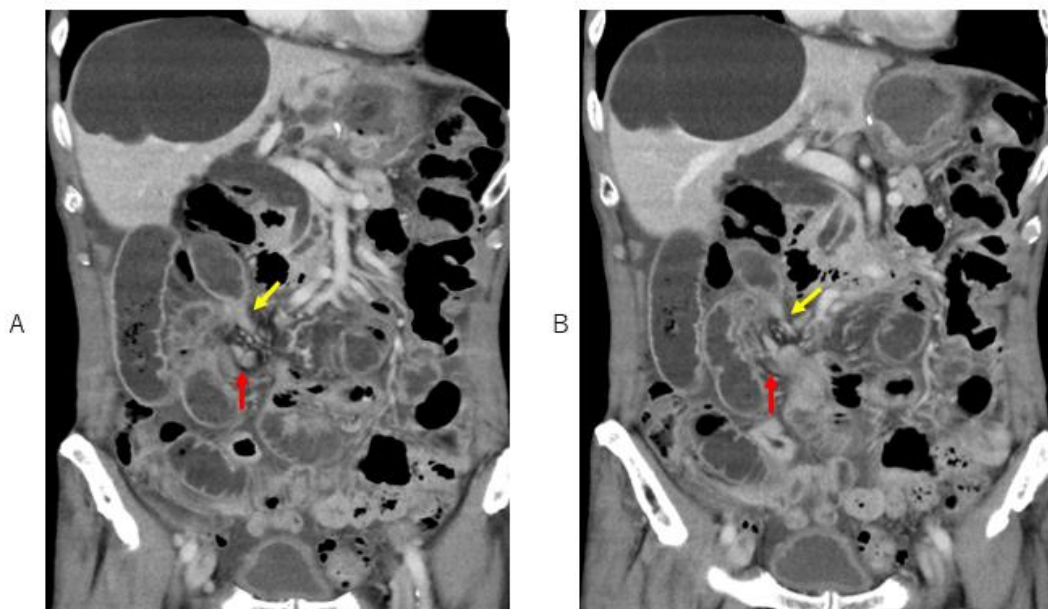


Fig.8 A yellow arrow indicates a beak sign saying stenosis between oral dilated small bowel and dilated closed loop small bowel (A, B). A red arrow indicates a dot sign saying stenosis between dilated closed loop small bowel and anal constrictive small bowel (A, B).

# What is an imaging diagnosis?

---

1. Intestinal intussusception
2. Adhesive ileus
3. Internal hernia
4. Strangulation ileus
5. Infectious enteritis

answer

2025.9.5