

A Case of the Week

Case 403

A thirty-year-old male presented in our hospital for abdominal pain, diarrhea five times per day and fever of 39.5 centigrade. He was usually in condition of constipation, but he experienced soft stool to muddy stool from ten days before following ingestion of half-row meat. Laboratory test revealed CRP 0.48 mg/dL, white blood cells 37400/mm³, eosinophils 46.2%. He took abdomen CT for further investigation (Figs 1-3).

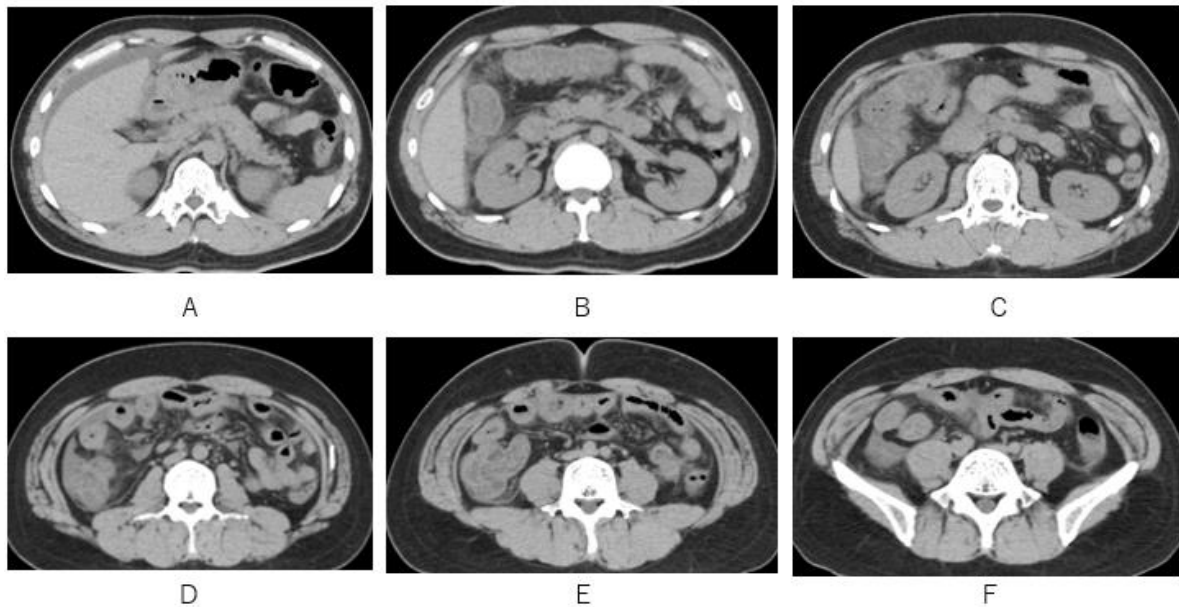


Fig.1 Ascites (A) and edematous mural thickening of transverse colon (B), ascending colon (B, C, D), cecum (E), ileum end (E, F), are depicted on axial abdomen CT.

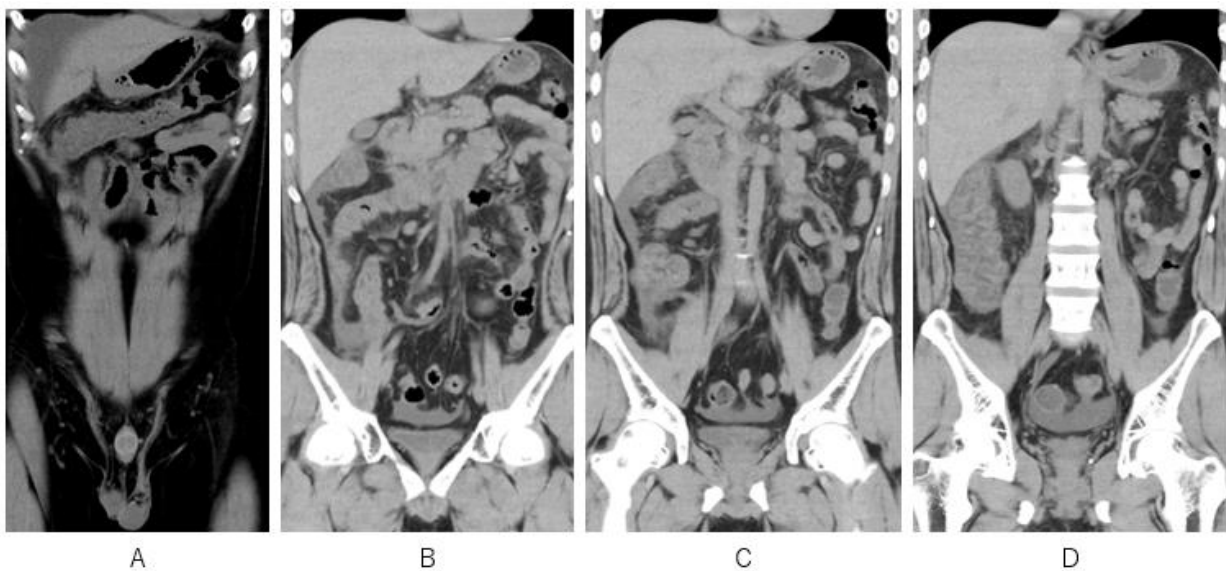


Fig.2 Ascites (A) and edematous mural thickening of transverse colon (B), ascending colon (C, D), cecum (C), ileum end (B), are depicted on coronal abdomen CT.

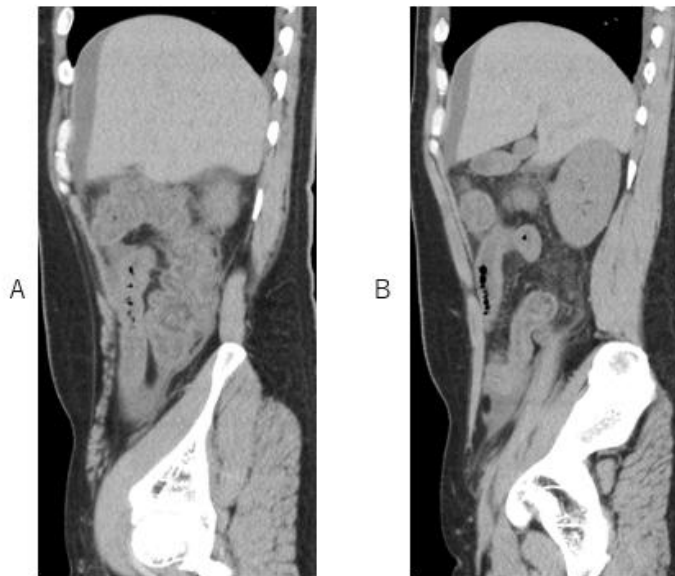


Fig.3 Ascites (A, B) and edematous mural thickening of transverse colon (A), ascending colon (A), cecum (B), ileum end (B), are depicted on sagittal abdomen CT.

What is an imaging diagnosis?

1. Infectious ileitis and colitis
2. Ulcerative colitis
3. Crohn disease
4. Drug induced colitis
5. Eosinophil colitis

answer

2025.9.12