

A Case of the Week

Case 407

An eighty-five-year-old male presented in our hospital for memory loss, not coming out names of persons, cities and things for the past three months. He experienced bladder cancer and had an essential tremor for the past ten years. He took brain MRI for further investigation (Figs. 1-3).

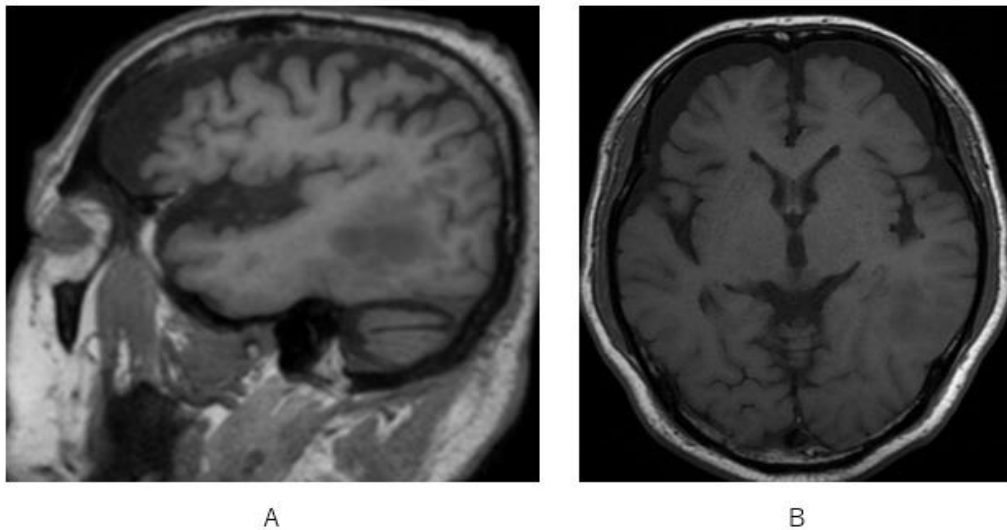


Fig. 1 A space occupying lesion with low signal intensity is depicted at left associated area on images of sagittal T1WI (A) and axial T1WI(B).

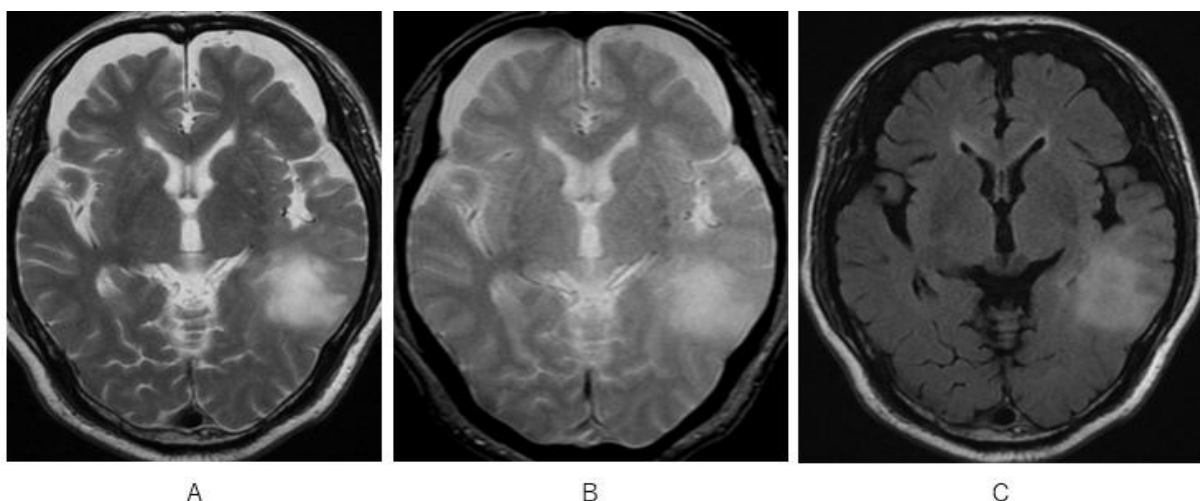


Fig. 2 A space occupying lesion with high signal intensity is depicted at left posterior associated area on T2WI (A), T2*WI (B) and FLAIR (C).

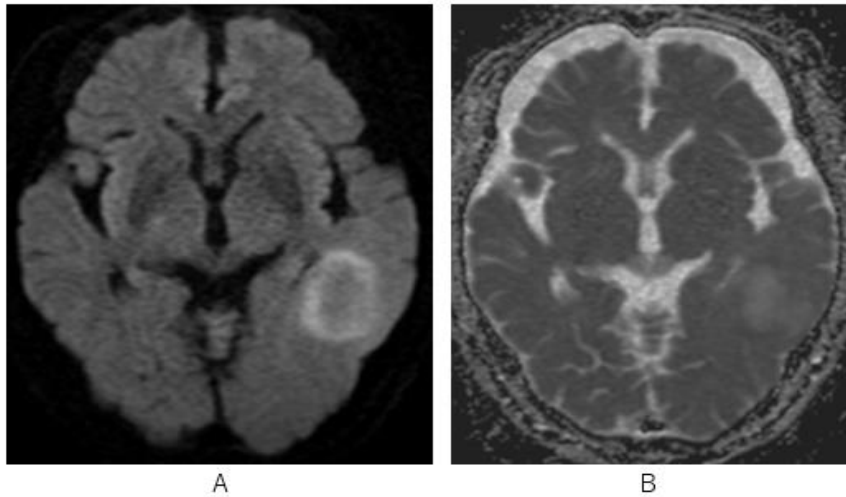


Fig.3 A space occupying lesion with ring-like high signal intensity is depicted at left posterior associated area on Diffusion WI whose ADC values are 0.665 in the margin and 1.440 in the center.

ADC margin 0.665
Center 1.440

What is a possible imaging diagnosis?

- a. Brain infarction
- b. Metastatic brain tumor
- c. Malignant lymphoma
- d. Multiple sclerosis

1.abc 2.acd 3.bcd 4.all

answer

2025.10.10