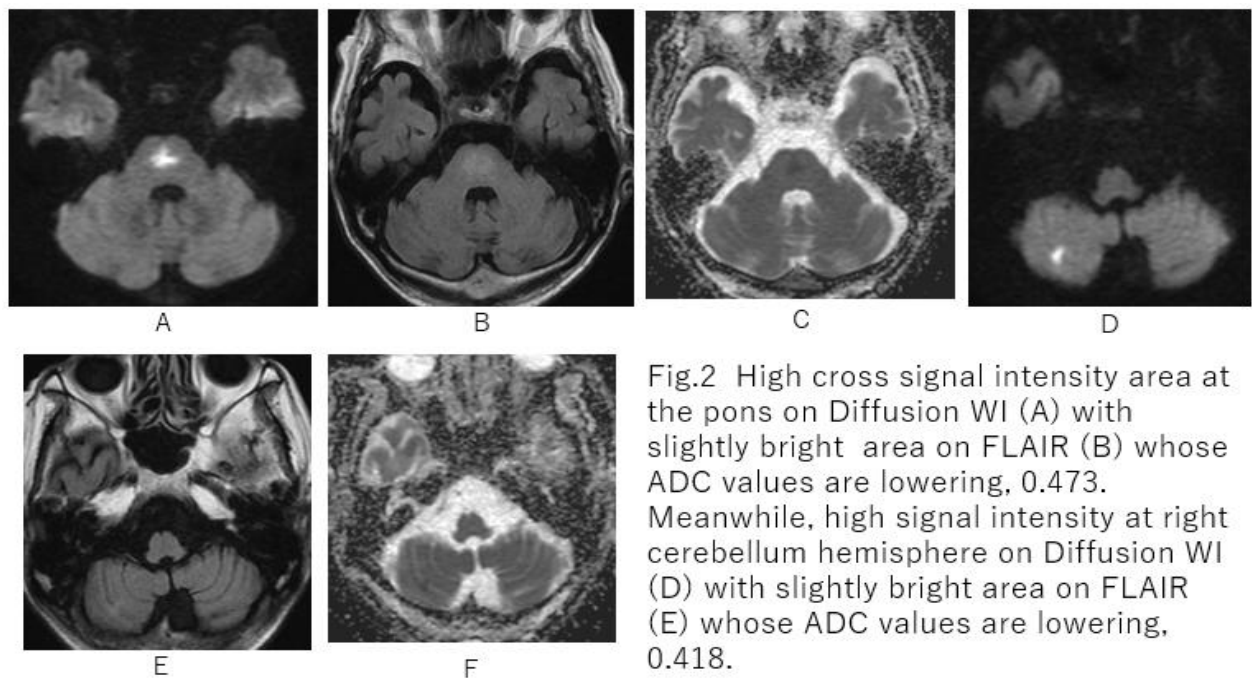
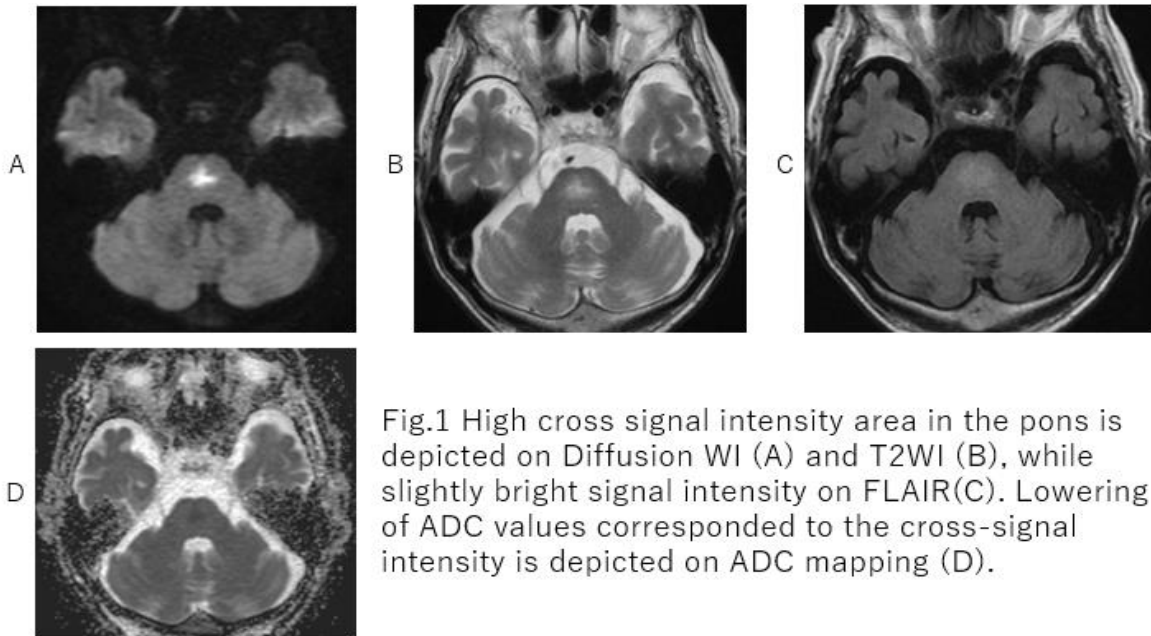


A Case of the Week

Case 415

An eighty-two-year-old male presented in our hospital for consistent dizziness for around one month. Twenty-four days before, he got drip infusion under diagnosis of dehydration. He has taken 1.5-liter water every day since then. He took MRI for further investigation (Figs 1. 2).



Crossline high signal intensity in the pons is depicted on MRIDWI. What are anatomical components of horizontal high signal intensity and vertical one, respectively?

1. Lateral meniscus and medial meniscus
2. Trigeminal nucleus and lateral spinothalamic tract
3. Abducent nerve nucleus and facial nerve nucleus
4. Middle cerebellar limb and Raphe nucleus

answer

2025.12.5