

A Case of the Week

Case 417

A ninety-five-year-old female was transported by ambulance to our hospital for fever and vomiting. Medical findings revealed operative skin scar in the abdomen. Body temperature: 38.2 centigrade, blood pressure 140/77 mmHg, heart beats 100/min emergency score E4V4M6, JCS 1-3. She took abdomen CT.

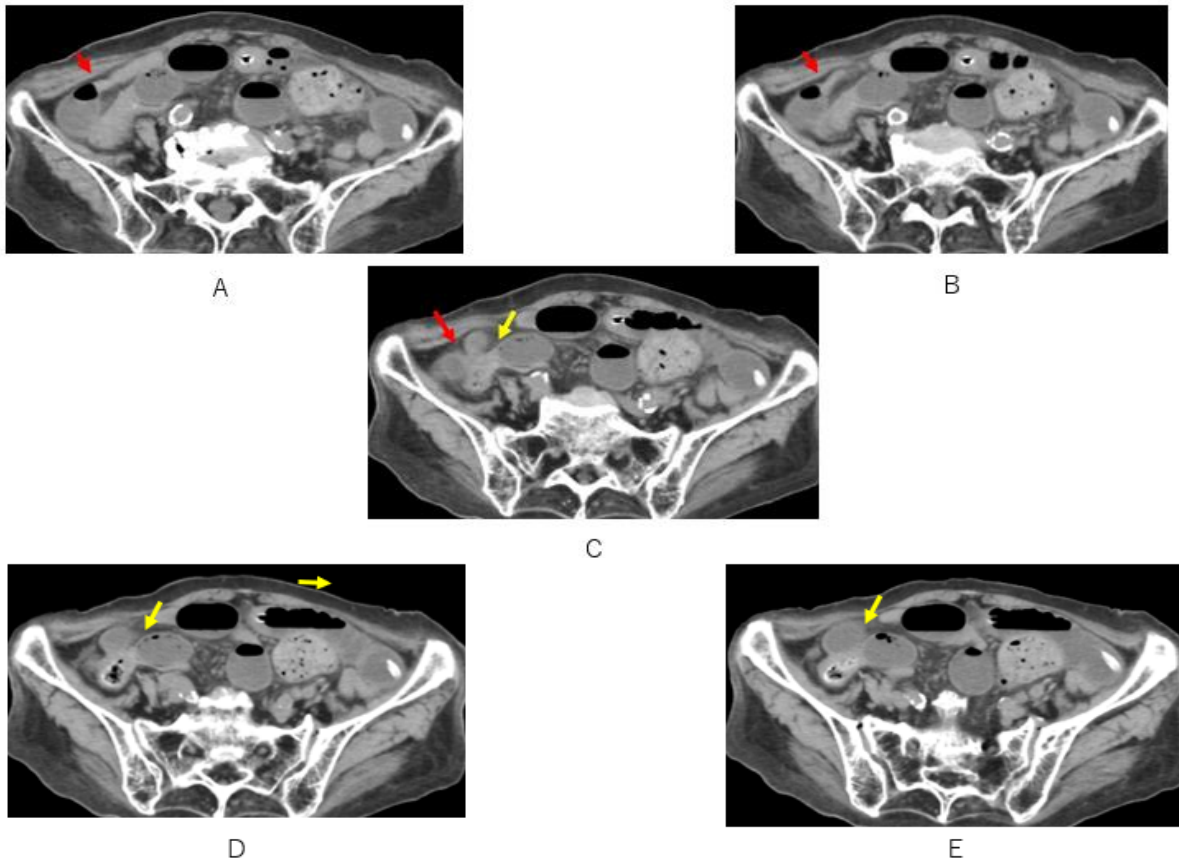


Fig.1 There is a double beak sign on axial CT: one beak between closed dilated loop and ana-sided constrictive small bowel (red arrow): another beak between dilated closed loop and oral-sided dilated small bowel (yellow arrow).

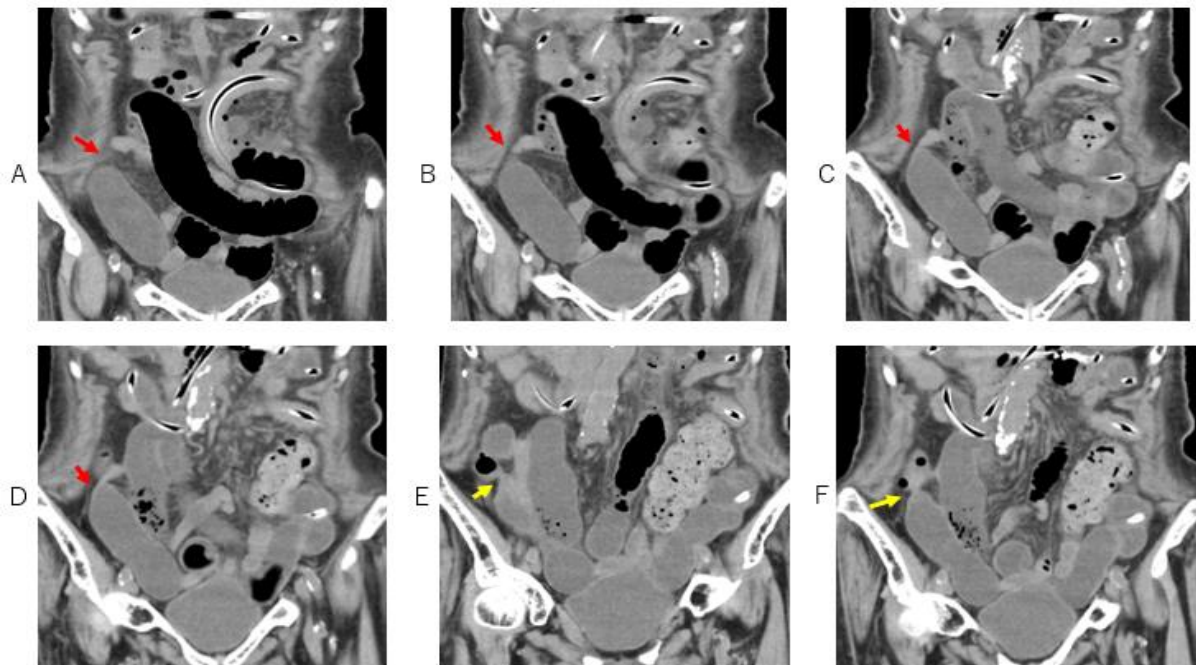


Fig.2 There is a double beak sign on coronal CT: one beak between closed dilated loop and ana-sided constrictive small bowel (red arrow): another beak between dilated closed loop and oral-sided dilated small bowel (yellow arrow).

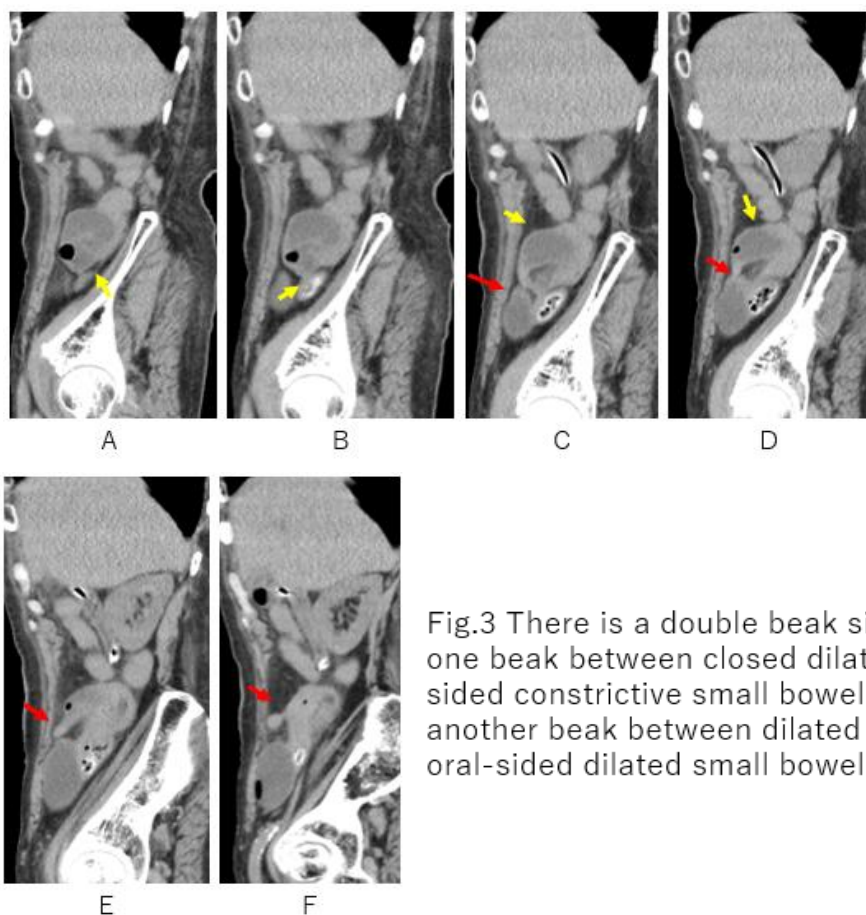


Fig.3 There is a double beak sign on sagittal CT: one beak between closed dilated loop and ana-sided constrictive small bowel (red arrow): another beak between dilated closed loop and oral-sided dilated small bowel (yellow arrow).

What is an imaging diagnosis?

1. Enteritis
2. Adhesive ileus
3. Torsion ileus
4. Peri cecal internal hernia

answer

2025.12.19