

# A Case of the Week

## Case 418

A three-year-old infant presented for feeling spinning during playing outside with his mother. He settled down after sleeping. He had no symptoms of common cold. He took brain MRI for further investigation (Figs. 1, 2).

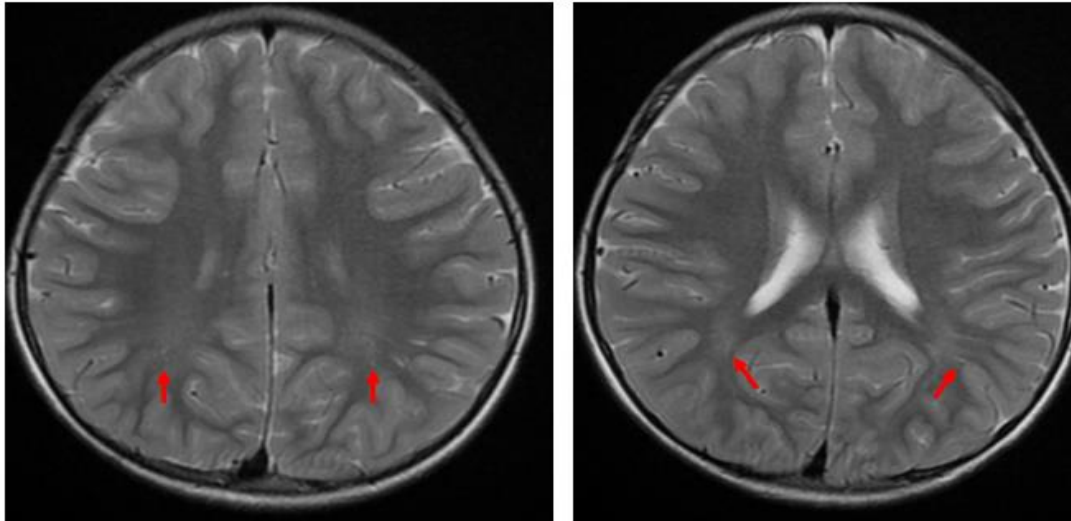


Fig.1 Focal high signal intensity in bilateral white matter with low signal band insides is depicted in bilateral associated area of parietal and occipital areas on axial T2WI.

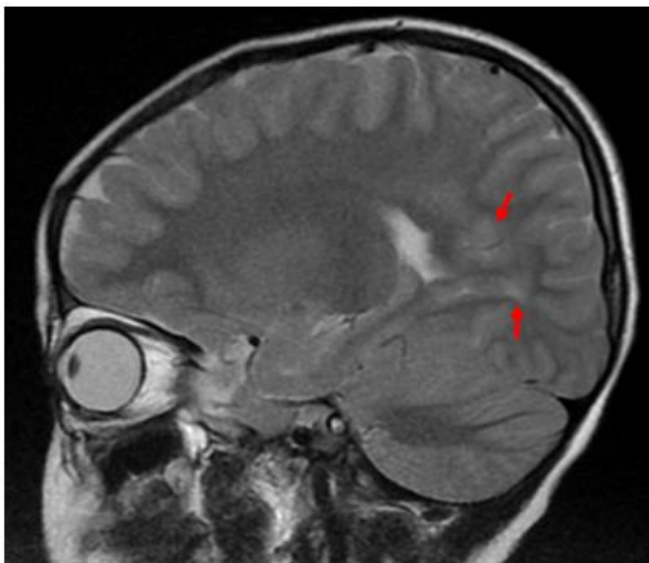


Fig. 2 Focal area with high signal intensity including low signal band in white matter of associated area of parietal and occipital lobes.

## What is possible imaging diagnosis?

---

1. Leukodystrophy hypoxic type
2. Leukodystrophy demyelination type
3. Disorder of glymphatic system
4. Hypoxia
5. Atherosclerotic change

answer

2025.12.26