

# A Case of the Week

## Case 421

A seventy-one-year-old male presented with otitis media. He had experienced ear discharge once a month since elementary school childhood. The incidence of ear discharge occurring decreased once every few years. Auditory findings revealed debris in left external auditory meatus and small concave at tympany membrane of superior tympanic cavity. He took auditory CT for further investigation (Figs 1-3).

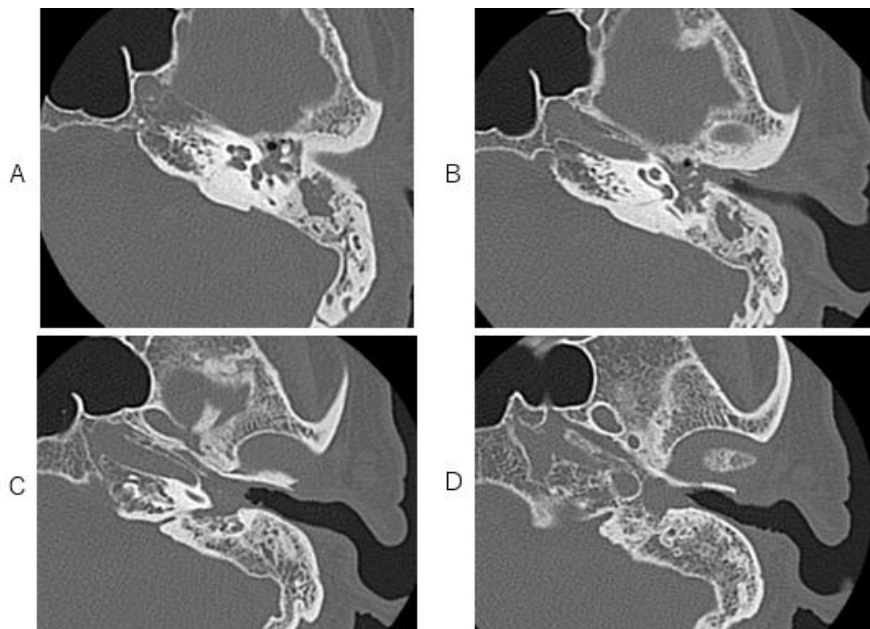


Fig.1 Tympanic cavities of superior, middle and inferior are occupied by soft tissue density mass without destruction of ossicles (A, B) on axial CT. Soft tissue mass partially invades to external auditory meatus (C, D).

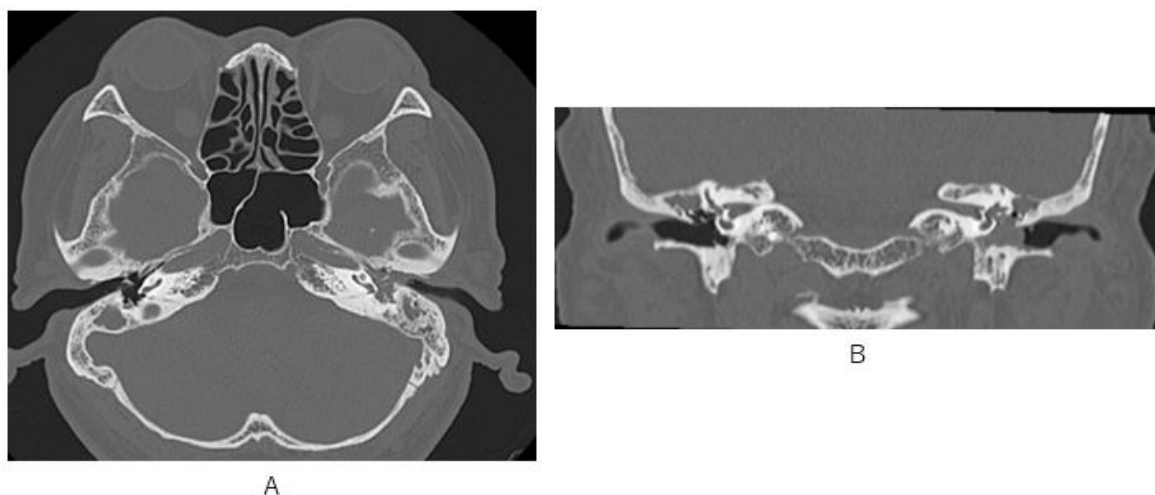
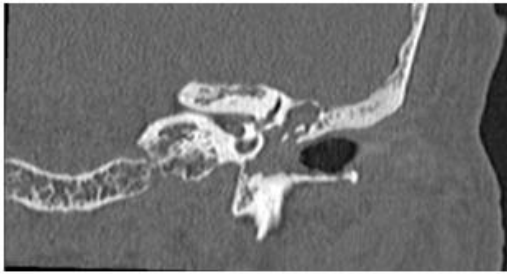
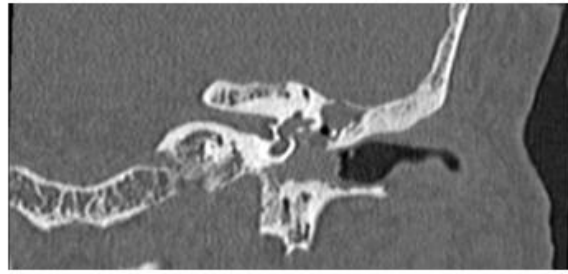


Fig.2 Compared to right healthy external meatus and middle auditory cavities, left middle cavities are occupied by soft tissue mass without bone destruction on axial and coronal CT (A, B).

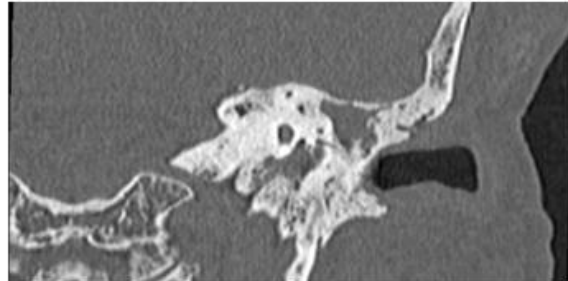


A



B

Fig.3 Middle auditory cavities are occupied by soft tissue attenuation mass without destruction of auditory ossicles on coronal CT.



C

What is possible imaging diagnosis?

1. Cholesteatoma
2. External Meatus Cancer
3. External Meatus granuloma
4. Otitis media

answer

2026.1.30