

A Case of the Week

Case 432

An eighty-year-old male presented in our hospital to confirm whether hepatocellular carcinoma that had been treated by radiofrequency ablation in S5 of right hepatic lobe last September, recurs or not. Laboratory test revealed hepatitis C antibody, positive. He took abdomen CT for further examination (Figs 1, 2).

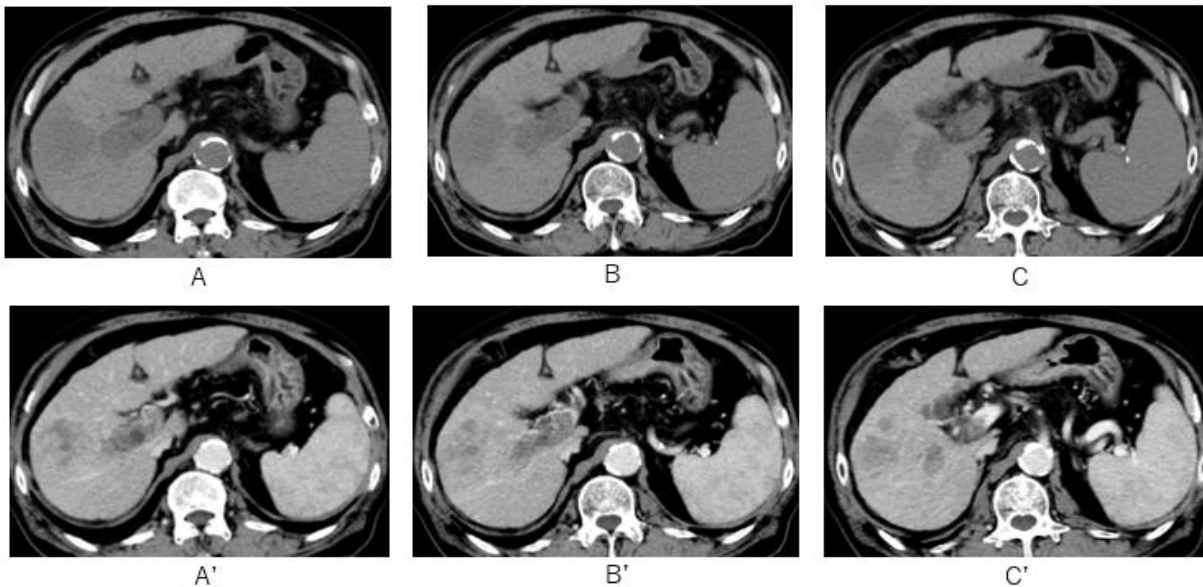


Fig.1 A large space occupying lesion at S5 with portal vein tumor thrombi extending right portal vein to main portal vein is depicted on non-enhanced CT (A-C) and contrast-enhanced CT (A'-C').

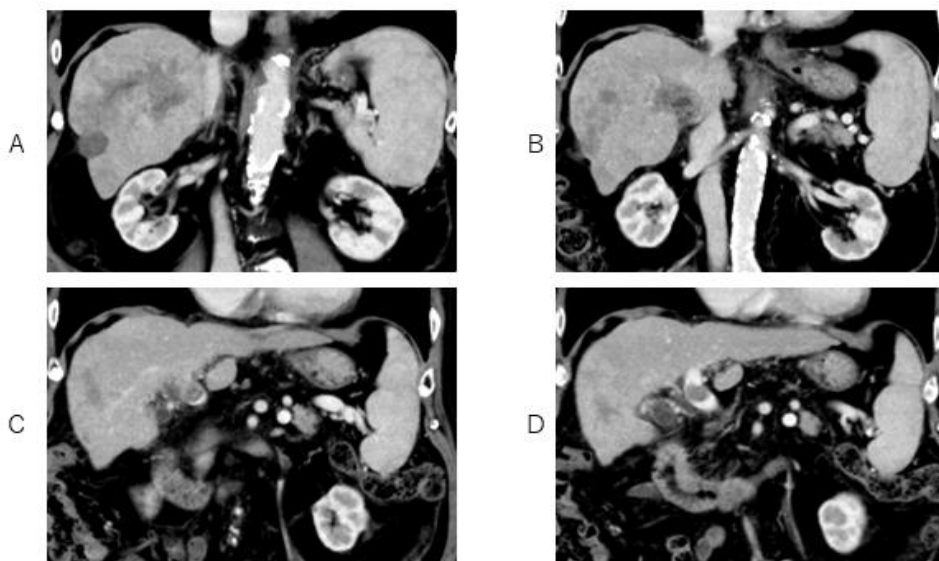


Fig.2 A large space occupying at S5 and S8 with tumor thrombi of right and main portal vein is clearly depicted on coronal contrast-enhanced CT.

What is imaging diagnosis?

- 1. Hepatocellular carcinoma under control after RFA**
- 2. Hepatocellular carcinoma local recurrence after RFA**
- 3. Hepatocellular carcinoma with portal tumor thrombi**
- 4. Hepatocellular carcinoma with biliary tumor invasion**

answer

2026.5.22