

A Case of the Week

Case 436

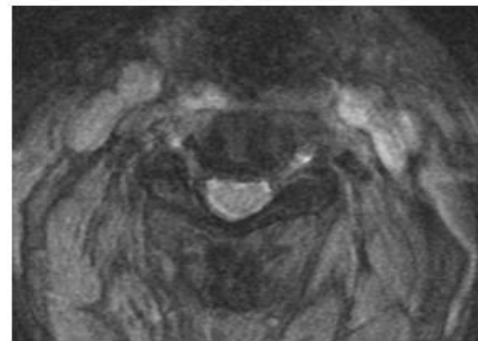
A seventy-eight-year-old male presented in our hospital with motion disorder of bilateral lower extremities with sensory paralysis of pain associated with bilateral shoulder joints pain (left > right) and bilateral knee joints pain. He has been unable to walk since the beginning of this January. He took brain MRI, lumbar spine MRI, thoracic MRI and finally cervical spine MRI (Fig.1, 2).



Fig.1 Continuous high signal intensity in the cervical spinal cord from C1 to C7 is depicted on sagittal images of spine MRIT2WI.



A



B

Fig. 2 High signal intensity in the level of spinal cord at C2 (A) and C4 (B), respectively on axial images of T2WIMRI.

What is imaging diagnosis? Check two from the diseases below.

- A. Cervical spinal syphilis
- B. Cervical spinal tuberculosis
- C. Optic nerve myelitis
- D. Sarcoidosis
- E. Multiple sclerosis

1. A, B 2. B, C 3. C, D 4. D, E

answer

2026.6.12